

# HARVESTER HEADS

PONSSE

ROBUST STRUCTURE, FIRST CLASS SAWING POWER, EXCELLENT GRIPPING GEOMETRY AND UNCONTESTED AGILITY TO ENABLE FASTER, MORE EFFICIENT, AND COMPREHENSIVE ECONOMICAL HARVESTING

H5 | H6 | H7 | H8 | H7 HD EUCA | H8 HD EUCA | H7 HD | H8 HD | H9 | H10



# **MACHINE USERS ARE THE BEST EXPERTS, SO WE ALWAYS LISTEN TO THEM**

**Einari Vidgrén**, the son of a small farmer from Northern Savonia, Finland, started working at logging sites using a frame saw in 1957, at the age of 14. Einari was carried away by forestry and at the end of the 1960s, he developed a load-carrying forest tractor in a local village workshop.





## A logger's best friend

Providing the best possible solution for every forestry need has been a fundamental driver throughout PONSSE's history. We are proud of our customer closeness and will continue to develop the partnerships in the future.

The world's best forest machines and supporting services are not only the most efficient, versatile, and reliable way to harvest. They are also the best way to ensure sustainable forest management at all types of logging sites, all over the world.





## ***DRIVEN BY CHANGE***

Ponsse's roots are deep in the forest. The forest connects us with our customers and partners globally. Being close to our customers is how we continuously develop and innovate forestry solutions that make a difference.

We are continuously developing our solution offerings as well as our operations globally. To innovate, we experiment and develop our ecosystems to support fast introduction of new technologies to add value to our customers. Being able to provide the best available solutions for forestry customers is a matter of honor to us.





## ***EFFICIENT AND SUSTAINABLE***

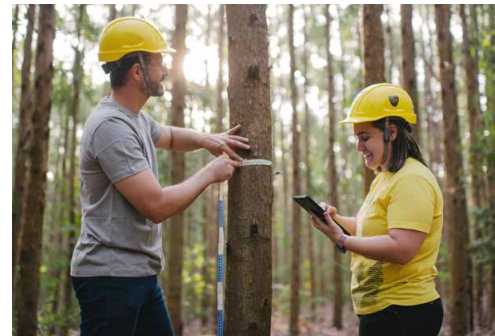
Since our foundation in 1970, we've been guided by our respect for the environment and an ongoing strive towards sustainable development. That is why we've dedicated ourselves exclusively to the manufacture, sale, service, and development of efficient and environmentally friendly cut-to-length machines. The key to the method's success lies in machinery that is efficient, adaptable, environmentally friendly, and provides superior comfort for the user.

The cut-to-length method was developed to optimize the efficiency of the production chain of logging and wood processing by removing overlapping work stages. Trees are processed in the forest according to use, which enables high value yield and an effective logistic chain. Different thinning and regeneration felling models can be applied flexibly, because the machines are easy to maneuver, and trees are processed efficiently one by one.

## ***RISING TO THE OCCASION***

CTL machinery is designed to be multifunctional: the same machines can be used for different types of harvesting, from first thinning to regeneration felling. Due to the versatile nature of the machinery in the CTL method, the prevailing harvesting conditions have a significantly smaller impact on productivity. From steep slopes to soft ground – CTL machines work reliably and efficiently.

The modern harvester receives details of the required timber grades automatically and in real time from the client. This is why our harvesters always produce precise and high-quality timber. The trunk is optimally used and there is little waste.







## ***THE KEY TO FAST, EFFICIENT, AND ECONOMICAL HARVESTING***

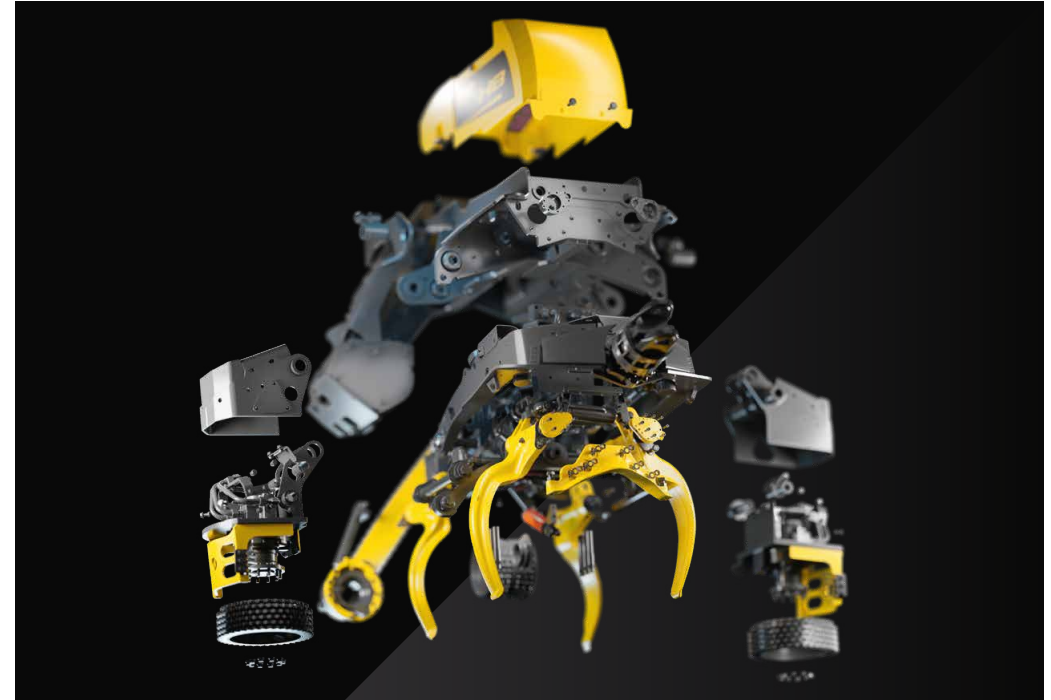
The PONSSE harvester head collection covers the entire range of harvesting needs, from energy wood harvesting to heavy-duty regeneration felling. PONSSE harvester heads are widely used in both wheeled and tracked base machines. All PONSSE models offer productivity and accuracy as well as durability and long service life.

High-grade materials, state-of-the-art design, and the strong structure of our harvester heads ensure durability even when working long shifts in a site with plenty of large stems. The correct frame length is accurately engineered to control the stems and pass curves. As even the largest stems are taken underneath by feed rollers, the grip stays firm and the friction low. This contributes to lower pressure settings that results in better operating efficiency and lower fuel consumption.

The powerful motor and sufficient head speed enable fast and efficient sawing. Advanced geometry prevents saw bars from bending and cracking trees. The large tilt angle efficiently prevents the trunk hitting the tilt frame stoppers, which allows smooth feeding through the head.

Four optimally designed, long and movable knives along with one adjustable bolted top knife ensure that with PONSSE harvester heads, trees are easy to grab and delimiting takes place confidently. The advanced OPTI system makes measuring accurate and reporting convenient.

Optimal motor sizes are available for various needs and situations.



## ***PONSSE HH360 ROTATOR***

PONSSE HH360 is a harvester head rotator that literally widens the perspective on efficient harvesting to a full 360 degrees. With PONSSE HH360 rotator in use, the hoses stay in a fixed position from crane tip to rotator, all the time. This enables rotating the head freely without having to worry about unexpected downtime caused from twisted hoses. The operator's work becomes swifter, and the overall efficiency of the jobsite is significantly improved.

The sturdy, powerful and exceptionally energy efficient PONSSE HH360 rotator is globally available for H6, H7, H8, H7 HD, H8 HD, H7 HD Euca and H8 HD Euca harvester heads when installed as a loose head installation.





***RISING SUCCESSFULLY  
TO EVERY OCCASION***

# WIDE VARIETY OF HARVESTER HEADS FOR YOUR LOGGING SITE

These versatile, durable, and economical heads operate efficiently at different types of logging sites, and they get the job done even with large-diameter trees. Compared to their size, they are exceptionally powerful, yet agile, precise, and – thanks to top-notch properties such as excellent gripping geometry – also convenient to handle. These excellent all-around harvester heads are trusted by loggers around the world. They definitely have what it takes to make work faster and more efficient.



## H8

### A HARVESTER HEAD THAT KEEPS YOU LOGGING

PONSSE H8 boasts – especially in relation to its compact size – exceptional power and ability to perform. The head's agility enables smooth operations in all types of forests, PONSSE H8 maintains its stability well. This results for example in efficient feeding and fast, yet flowing tilt function.

PONSSE H8 provides uncontested durability, excellent reliability, and lower lifecycle cost – also to the saw blade and chain. The more challenging the conditions, the better PONSSE H8 stands out: the renewed saw box prevents snow from packing, and the completely new Active Speed function enables changing the feeding speed incredibly smoothly.



740 mm  
(29.1 in)



1400 kg  
(3,086 lb)



37,2 kN  
(8 363 lbf)



790 mm  
(31.1 in)

ERGO  
SCORPION GIANT  
BEAR

### ACTIVE SPEED

## REDEFINING FEEDING PERFORMANCE

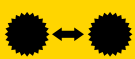
The advanced Active Speed function enables adjusting the speed of the harvester head according to tree species and trunk diameters. This raises the work efficiency and productivity to an entirely new level.

# NEW H7

## A COMPACT, SOLID, AND POWERFUL CHOICE FOR ALL TYPES OF LOGGING SITES.

Sharing a lot of the same features than H8, new PONSSE H7's powerful feed and excellent power-to-weight ratio add productivity to operations in all types of sites. Maximum feed speed at the correct length, combined with controlled feed acceleration and deceleration, reduces feed damage and improves machine efficiency.

Thanks to new H7's improved geometry, it can hold up even big trees conveniently. The adjustable grip pressure of delimiting knives and feed rollers, while feed rollers support trees from below, guarantees minimal friction and a firm grip during feeding. Easy-to-use automated systems ensure fast cutting and adjust sawing according to the tree diameter, improving the efficiency of sawing and extending the service life of the saw blade and chain. The advanced Active Speed function is a new feature in H7 harvester head.



650 mm  
(25.6 in)



1 270 kg  
(2,800 lb)

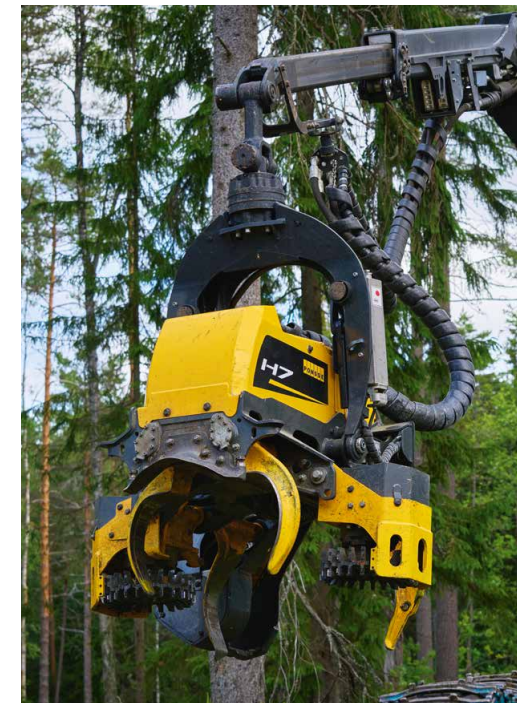


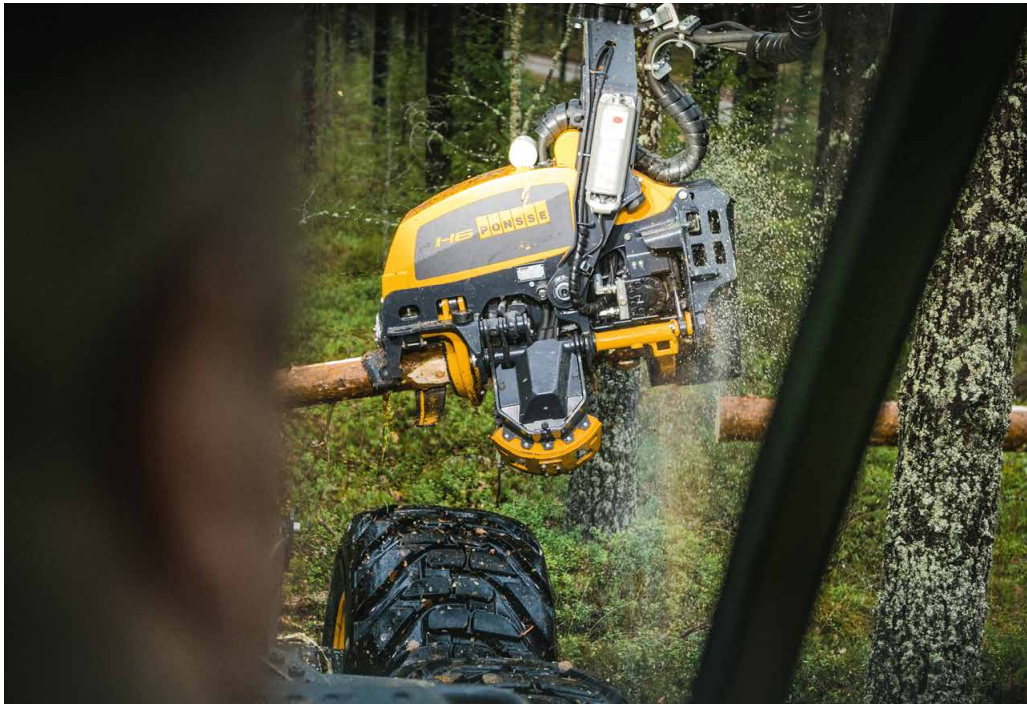
30 kN  
(6,744 lbf)



790 mm  
(31.1 in)

COBRA  
ERGO  
SCORPION KING  
SCORPION GIANT  
BEAR

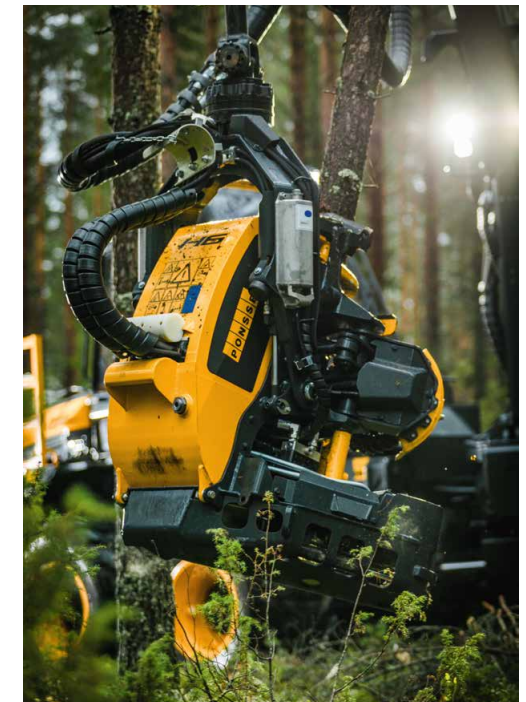




# H6

## EFFICIENT AND EFFECTIVE YET COMPACT IN SIZE

The PONSSE H6 harvester head is ideal for diverse types of logging sites, ranging from first thinning to regeneration felling. The large opening range and precise controls make working easy. Wide tilt movements, combined with quick and powerful feeding and sawing, make it highly productive at all sites. The PONSSE H6 harvester head's compact structure, large feed rollers, excellent delimiting knives and the low grip friction of the knives are qualities that guarantee efficiency, also in difficult conditions. The PONSSE H6 harvester head is also excellent for multi-stemming. It significantly speeds up harvesting and improves production at small-diameter sites.



600 mm  
(23.6 in)



1 050 kg  
(2,315 lb)

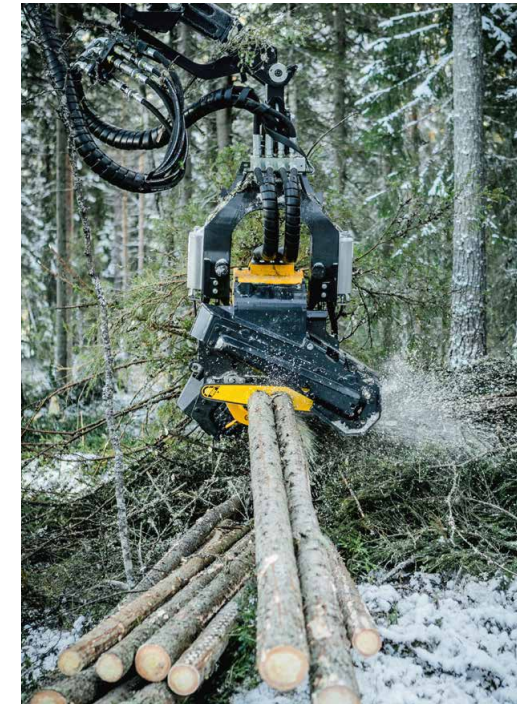


25 kN  
(5,620 lbf)



640 mm  
(25.2 in)

BEAVER  
COBRA  
SCORPION  
ERGO  
SCORPION KING  
SCORPION GIANT



# H5

## A COMPACT THINNING TOOL

PONSSE H5 is an all-around harvester head designed specifically for efficient thinning. Its large opening range, long delimiting knives and the wide and correctly positioned upper feed roller make working at thinning sites amazingly efficient. It is ideal when removing individual trees or collecting stems and in multi-stemming. The extremely fast yet economical feeding and sawing guarantee high productivity in all conditions.

530 mm  
(20.8 in)

900 kg  
(1,984 lb)

19 kN  
(4,271 lbf)

640 mm  
(25.2 in)

BEAVER  
COBRA  
SCORPION  
SCORPION KING





### PONSSE H5

An agile and precise head that is productive at all thinning sites, even with larger diameter trees.

#### MAXIMUM OPENING (FEED ROLLERS)

530 mm (20.8 in)

#### CUTTING DIAMETER, ONE PASS

640 mm (25.2 in)

#### FEED SYSTEM

3 driving feed rollers

#### FEED FORCE

19 kN (4,271 lbf)

#### FEEDING SPEED

6 m/s (19.7 ft/s)

#### STARTING WEIGHT FROM

900 kg (1,984 lb)

### PONSSE H6

An excellent all-round harvester head with compact size, large opening range, and powerful feed.

#### MAXIMUM OPENING (FEED ROLLERS)

600 mm (23.6 in)

#### CUTTING DIAMETER, ONE PASS

640 mm (25.2 in)

#### FEED SYSTEM

3 driving feed rollers

#### FEED FORCE

25 kN (5,620 lbf)

#### FEEDING SPEED

6 m/s (19.7 ft/s)

#### STARTING WEIGHT FROM

1 050 kg (2,315 lb)

### NEW PONSSE H7

A compact, solid, and powerful choice for all types of logging sites.

#### MAXIMUM OPENING (FEED ROLLERS)

650 mm (25.6 in)

#### SAW BAR LENGTH

750/820 (900) mm (29.5/32.3 (35.4) in)

#### CUTTING DIAMETER, ONE PASS

CT+: 640/660 (790) mm (25.2/26.0 (31.1) in)

SC150: 635/650 (785) mm (25.0/25.6 (30.9) in)

#### FEED SYSTEM

3 driving feed rollers

#### FEED FORCE

30 kN, 25kN, 25–33 kN  
(6,744 lbf, 5,620 lbf, 5,620–7,419 lbf)

#### FEEDING SPEED

0–5 m/s, 0–6 m/s, 0–6 m/s  
(0–16.4 ft/s, 0–19.7 ft/s, 0–19.7 ft/s)

#### STARTING WEIGHT FROM

1270 kg (2,800 lb)

### PONSSE H8

Structure, power, and agility to take on even the largest-diameter trees.

#### MAXIMUM OPENING (FEED ROLLERS)

740 mm (29.1 in)

Ergo & Scorpion Giant: 650 mm (25.6 in)

#### SAW BAR LENGTH

820/900 mm (32.2 / 35.4 in)

#### CUTTING DIAMETER, ONE PASS

CT+: 660/790 mm (26.0 / 31.1 in)

SC150: 650/785 mm (25.6 / 30.9 in)

#### FEED SYSTEM

3 driving feed rollers

#### FEED FORCE

36 kN, 30 kN, 25–37.2 kN  
(8,093 lbf, 6,744 lbf, 5,620–8,363 lbf)

#### FEEDING SPEED

0–4.5 m/s, 0–5 m/s, 0–5.8 m/s  
(0–14.8 ft/s, 0–16.4 ft/s, 0–19.0 ft/s)

#### STARTING WEIGHT FROM

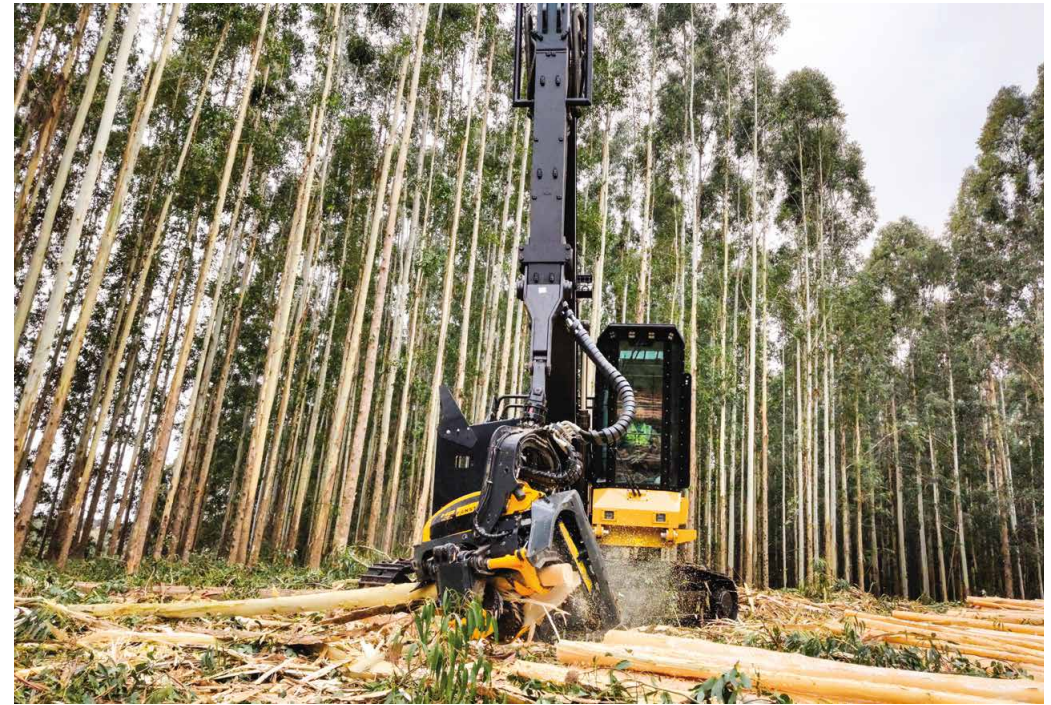
1 400 kg (3,086 lb)

***WHEN RUNNING OUT  
OF RESILIENCE IS  
NOT AN OPTION***



# SPECIAL HEADS FOR EUCALYPTUS FORESTS AND PLANTATIONS

After carefully listening to our customers, we decided to design a specific range of harvester heads for eucalyptus forests. These powerful heads possess special capabilities that enables them to truly work and last long. The structure has been reinforced in various ways, still keeping the heads very light and nimble and making them downright ideal for efficient debarking. Working takes place smoothly while the fuel economy stays high in relation to productivity.

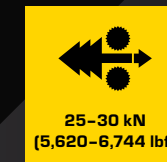
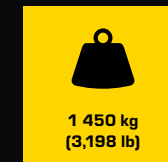


## H8 HD EUCA

### GENIOUS HEAVY-DUTY EUCA HEAD

PONSSE H8 HD Euca is optimised for debarking. The debarking knives and feed rollers guarantee good debarking results during the first feed. The automatic control ensures that the wood is always fed at maximum speed to the right length.

Reinforced frame and tilt arm give robustness needed in tough operations. The easy-to-use automatic features control the saw motion according to the tree diameter and saw bar position, and guarantee fast cutting. While it increases sawing efficiency, it also increases the service life of the saw bar and the chain. Saw control calibration is done simply by the push of a button. The tilt force and speed are based on its superb geometry.





# H7 HD EUCA

## TOUGH DEBARKER

The structure, reinforced in various ways, makes PONSSE H7 HD Euca a durable tool. But, regardless of the reinforced structure, it is very light and nimble. It makes working smooth and keeps fuel economy high relative to productivity.

Fast sawing, combined with precise and strong three-roller feeding, guarantees highly efficient debarking and delimiting. The material thickness has been increased considerably in just the right places to ensure maximised durability, without adding any unnecessary weight. Automatic functions guide saw movements according to the tree diameter and saw bar position, and guarantees fast cutting. This increases the efficiency of sawing and improves durability.



630 mm  
(24.8 in)



1 300 kg  
(2,866 lb)

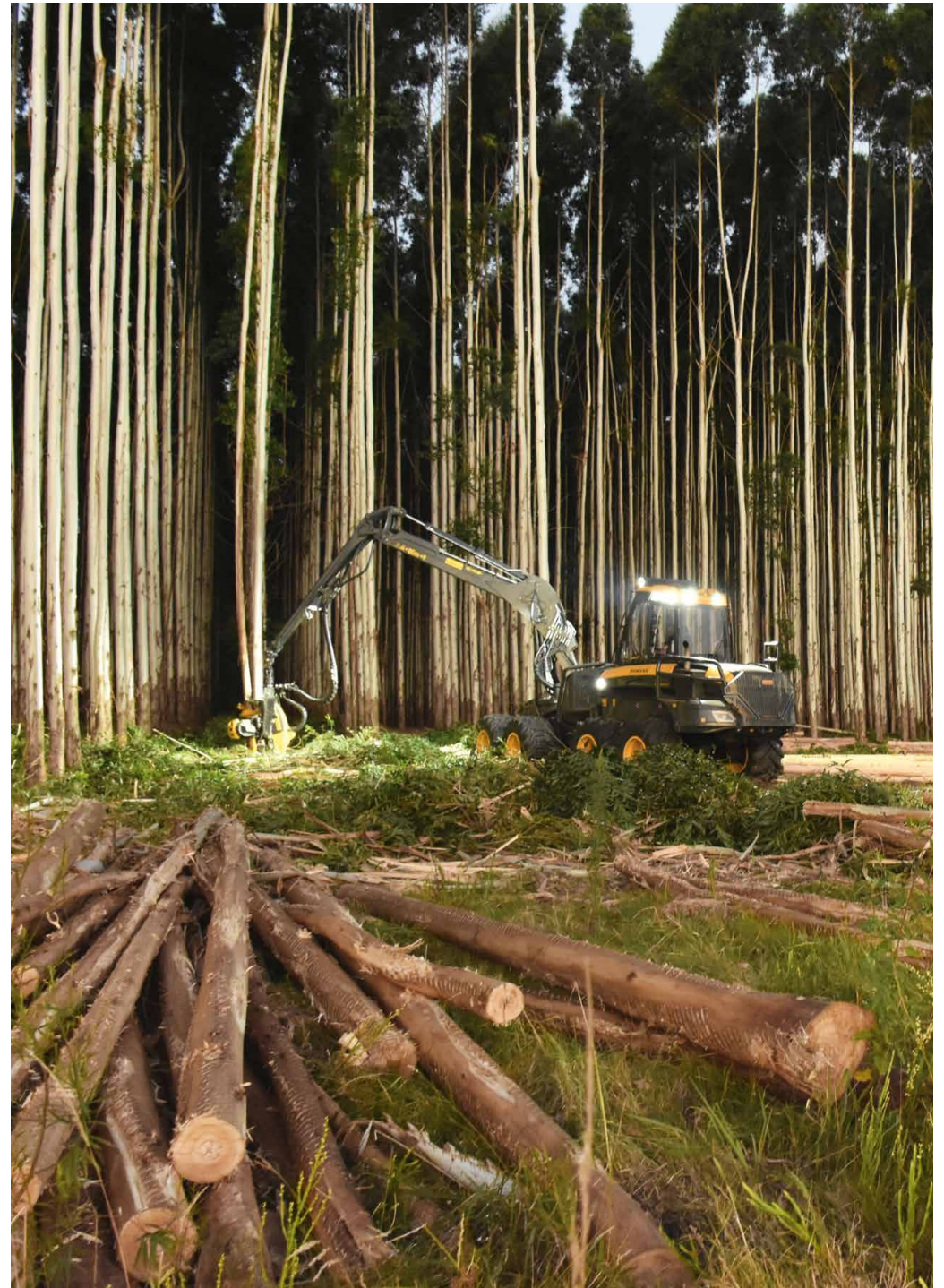


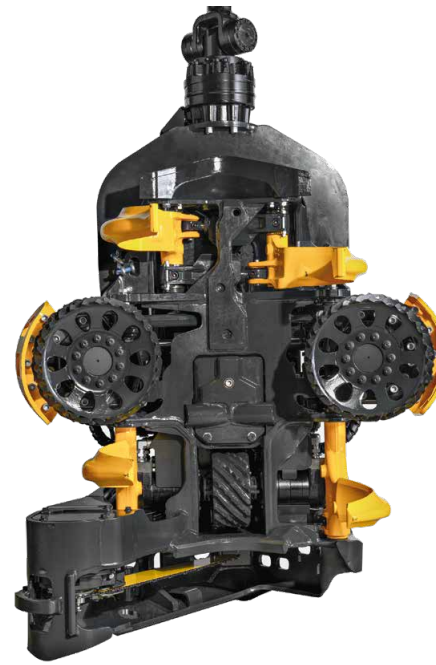
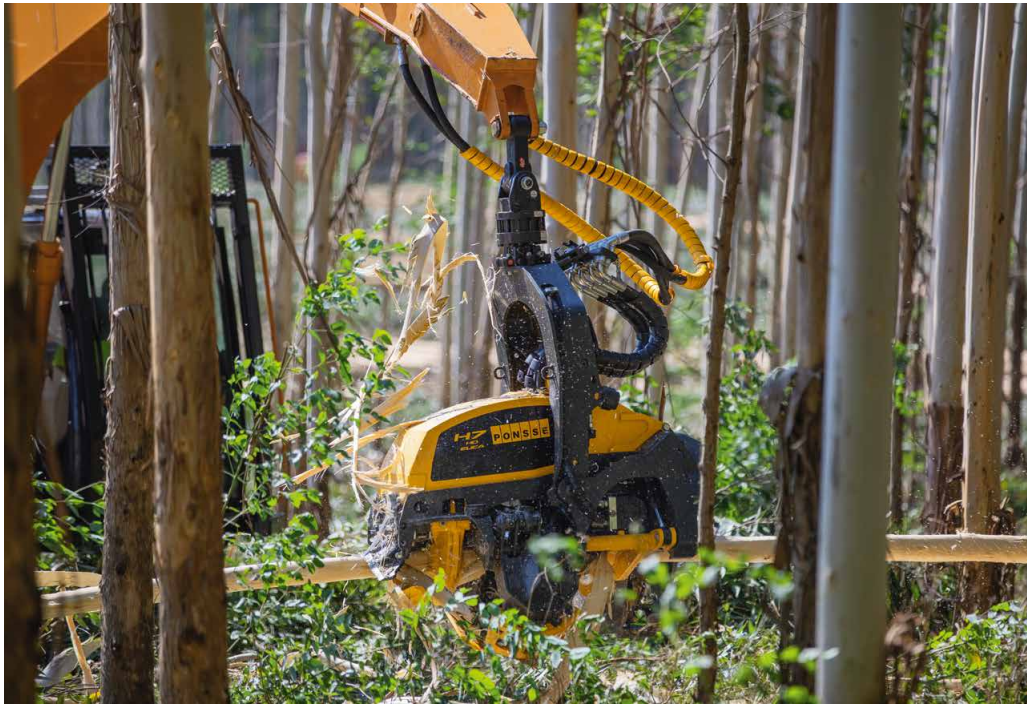
25 kN  
(5,620 lbf)



640 mm  
(25.2 in)

COBRA  
SCORPION KING  
SCORPION GIANT  
20 t  
base machine





### **PONSSE H7 HD EUCA**

A durable, light and nimble head that makes working smooth and keeps fuel economy high.

#### **MAXIMUM OPENING (FEED ROLLERS)**

630 mm [24.8 in]

#### **CUTTING DIAMETER, ONE PASS**

640 mm [25.2 in]

#### **FEED SYSTEM**

3 driving feed rollers

#### **FEED FORCE**

25 kN [5,620 lbf]

#### **FEEDING SPEED**

6 m/s [19.7 ft/s]

#### **STARTING WEIGHT FROM**

1 300 kg [2,866 lb]

### **PONSSE H8 HD EUCA**

A tough harvester head with substantial power for extremely effective debarking.

#### **MAXIMUM OPENING (FEED ROLLERS)**

740 mm [29.2 in]

#### **CUTTING DIAMETER, ONE PASS**

640/720/800 mm [25.2/28.3/31.5 in]

#### **FEED SYSTEM**

3 driving feed rollers

#### **FEED FORCE**

25-30 kN [5,620-6,744 lbf]

#### **FEEDING SPEED**

5 m/s [16.4 ft/s] + 6 m/s [19.7 ft/s]

#### **STARTING WEIGHT FROM**

1 450 kg [3,198 lb]

#### **OPTIONS**

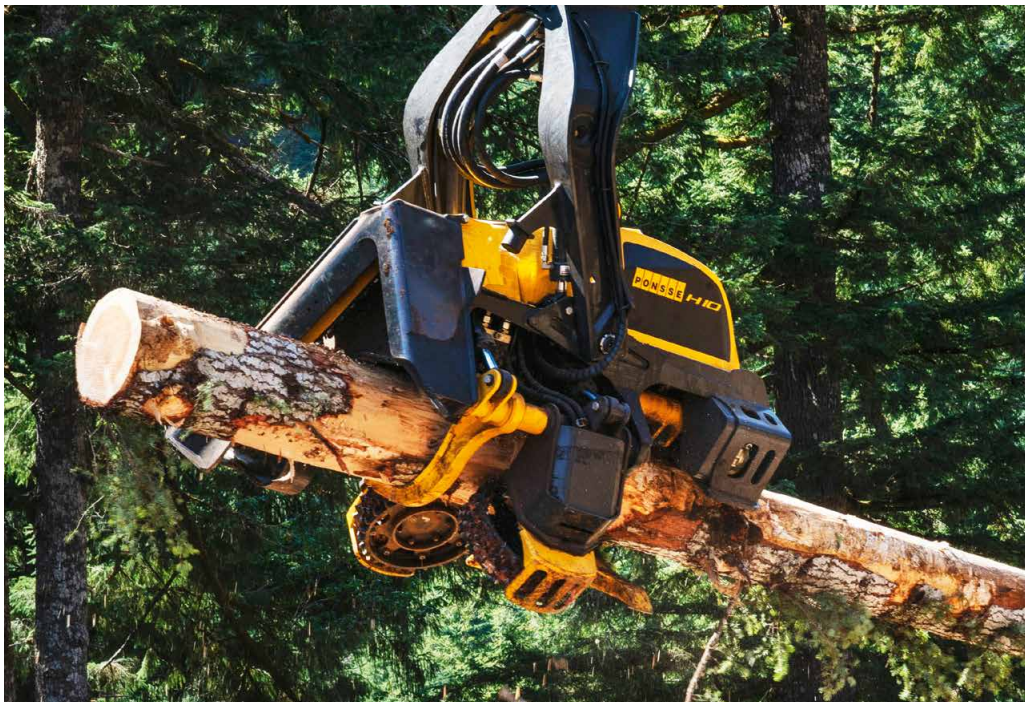
Top saw

***PUSHING  
BOUNDARIES  
IN A WAY  
THAT MAKES  
A DIFFERENCE***



# HARVESTER HEADS FOR THE LARGEST AND MOST DEMANDING SITES

The tougher the conditions get, the more essential features such as strong structure, highest quality components and efficient processing become. These harvester heads enable heavy-duty reliability and performance even for the most demanding logging operations, without making any sacrifices when it comes to excellent geometry and accurate control. Their uncontested power, firm grip and powerful feed guarantee a high efficiency ratio and reliability for years to come.

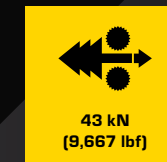
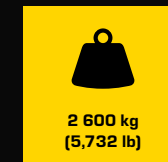


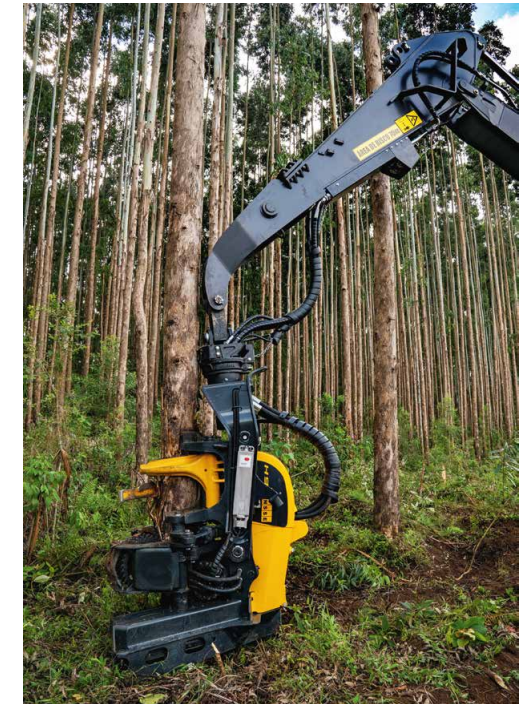
## H10

### A LARGE HEAD CUTS AND PROCESSES MORE EFFECTIVELY

PONSSE H10 has been made specifically for demanding harvesting conditions. It has also been tested in close cooperation with customers who logged at sites with large diameter trees. No compromises can be made over durability and power in demanding conditions. H10 has been designed with advanced technology and is built to be sufficient and sturdy.

H10 is highly precise. The Opti control system helps to feed the trees quickly and cut them to the correct length, with an accuracy of nearly one centimetre even when working at high speeds. H10 has been developed together with customers. As a result, it is highly precise, enjoyable to use and easy to maintain.





# H9

## BIG HEAD. HARD WORK.

A harvester head of this size class has never been this versatile. H9 is a processing head, but works well for felling as well. It is yet another example of our commitment to always stay in the forefront of developing solutions that take both efficiency and sustainability requirements of modern forestry into account.

930 mm  
(36.6 in)

2 150 kg  
(4,730 lb)

39 kN  
(8,770 lbf)

950 mm  
(37.4 in)

24-35 t





## H8 HD

### TOUGH PERFORMANCE

PONSSE H8 HD is a heavy-duty harvester head for felling and processing of hardwood and softwood in tough conditions. Strong grip, powerful feeding and fast sawing are packed in a robust and reliable package that can be fitted into various tracked carriers. Reinforced frame and tilt arm give robustness needed in tough operations. Wide feed roller geometry supports even the large stems with feed rollers instead of delimiting blades. This allows using lower pressure on knives, improving fuel economy and feeding speed as well as measuring accuracy. Optimal tilt pivot geometry minimizes the upwards torque of the head, giving smoother feeding and better grip of the tree.



740 mm  
(29.2 in)



1 450 kg  
(3,198 lb)



36 kN  
(8,093 lbf)



720/800 mm  
(28.3/31.5 in)

BEAR  
20-30 t  
base machine

# H7 HD

## EFFICIENT DURABILITY

Strong structure, highest quality components and powerful processing are a necessity in hard working conditions. Suitable for tracked machines as well as large wheeled harvesters, PONSSE H7 HD offers heavy-duty reliability and performance for demanding work.



650 mm  
(25.6 in)



1 200 kg  
(2,646 lb)

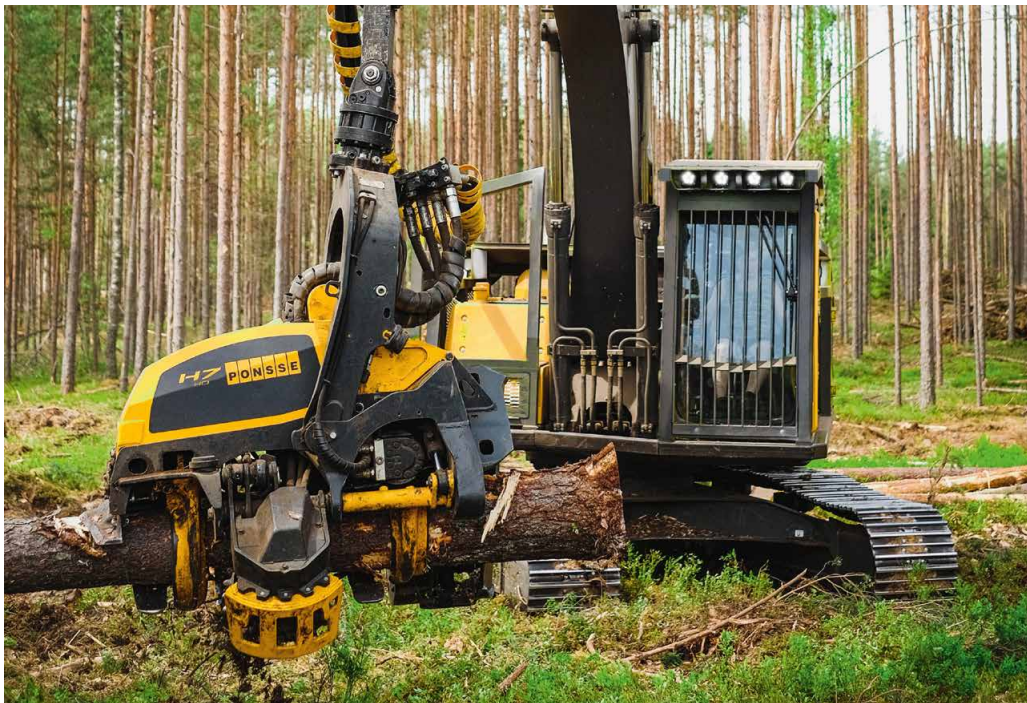
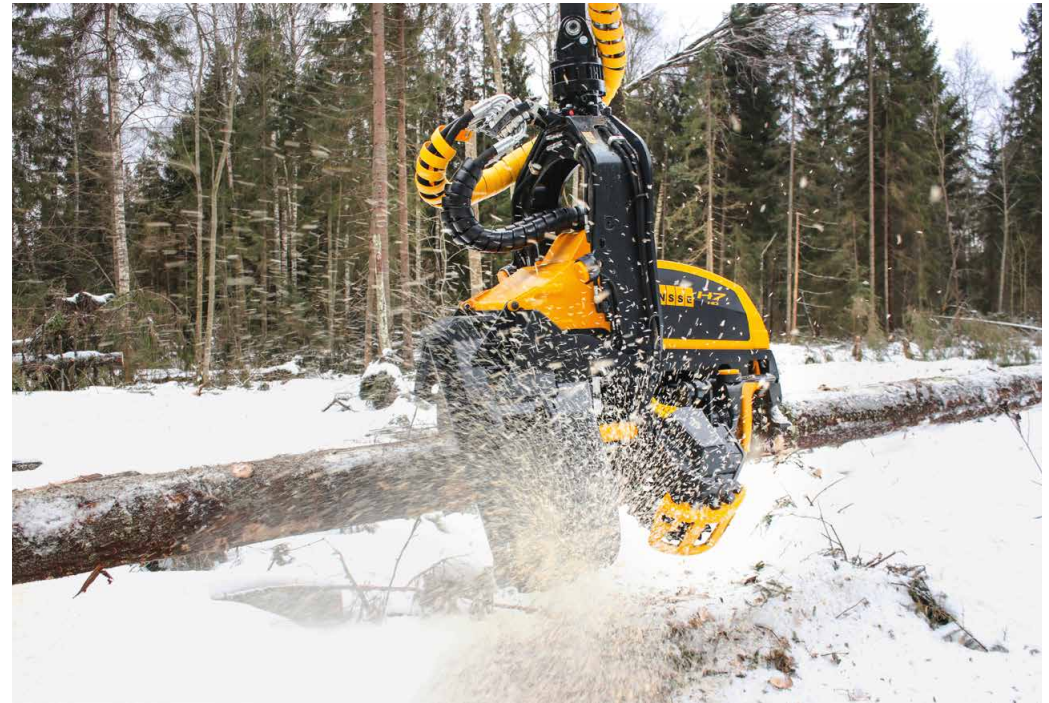


30 kN  
(6,744 lbf)



640 mm  
(25.2 in)

BEAR  
20-25 t  
base machine





### **PONSSE H7 HD**

Reliability and performance thanks to strong structure, quality components and powerful processing.

#### **MAXIMUM OPENING (FEED ROLLERS)**

650 mm (25.6 in)

#### **CUTTING DIAMETER, ONE PASS**

640 mm (25.2 in)

#### **FEED SYSTEM**

3 driving feed rollers

#### **FEED FORCE**

30 kN (6,744 lbf)

#### **FEEDING SPEED**

5 m/s (16.4 ft/s)

#### **STARTING WEIGHT FROM**

1 200 kg (2,646 lb)

### **PONSSE H8 HD**

Plenty of power and excellent geometry for the most demanding logging operations.

#### **MAXIMUM OPENING (FEED ROLLERS)**

740 mm (29.2 in)

#### **CUTTING DIAMETER, ONE PASS**

720/800 mm (28.3/31.5 in)

#### **FEED SYSTEM**

3 driving feed rollers

#### **FEED FORCE**

36 kN (8,093 lbf)

#### **FEEDING SPEED**

5 m/s (16.4 ft/s)

#### **STARTING WEIGHT FROM**

1 450 kg (3,198 lb)

#### **OPTIONS**

Top saw

### **PONSSE H9**

Strong power, reliable structure, and accurate control all in the same package.

#### **MAXIMUM OPENING (FEED ROLLERS)**

930 mm (36.6 in)

#### **CUTTING DIAMETER, ONE PASS**

950 mm (37.4 in)

#### **FEED SYSTEM**

4 driving feed rollers

#### **FEED FORCE**

39 kN (8,770 lbf)

#### **FEEDING SPEED**

4.7 m/s (15.4 ft/s) or 5.7 m/s (18.7 ft/s)

#### **STARTING WEIGHT FROM**

2 150 kg (4,730 lb)

#### **OPTIONS**

Top saw

### **PONSSE H10**

Designed and built for heavy-duty processing especially in challenging conditions.

#### **MAXIMUM OPENING (FEED ROLLERS)**

895 mm (35.2 in)

#### **CUTTING DIAMETER, ONE PASS**

950 mm (37.4 in)

#### **FEED SYSTEM**

3 driving feed rollers

#### **FEED FORCE**

43 kN (9,667 lbf)

#### **FEEDING SPEED**

Max. 5 m/s (16.4 ft/s) at 90 gpm (340 l/min)

#### **STARTING WEIGHT FROM**

2 600 kg (5,732 lb)

#### **OPTIONS**

Top saw

## MAINTENANCE NETWORK

# SUPPORT RIGHT WHERE IT IS NEEDED

Our goal is to address local conditions and bring our services as close to you as possible. We provide comprehensive support, for example, in the form of training and technical advisory. PONSSE customer service centers, field maintenance and maintenance help desk are there for you whenever you need support. You can also let Ponsse maintain all your harvesting machines.



## GENUINE PARTS

A machine's quality is determined by the quality of its parts. PONSSE Original parts are designed and manufactured for use in PONSSE forest machines. This ensures they fit perfectly, and that your machine works reliably and has a long service life.

## BUDGET PARTS

PONSSE Budget parts are more affordable than regularly priced parts. They can have slight cosmetic defects or cannot be sold as new for other reasons. They are still completely fit for use, which has been validated by an inspection.



A logger's best friend



### PONSSE PLC

Ponssentie 22  
FI-74200 Vieremä  
FINLAND  
Tel. +358 20 768 800  
[www.ponsse.com](http://www.ponsse.com)

### PONSSE MACHINES IRELAND LTD

Cappakeel, Emo  
Portlaoise, R32NN28, Laois  
IRELAND  
Tel. +353 57 863 3762

### PONSSE UK LTD.

4 Annan Business Park  
Annan, Dumfriesshire, DG12 6TZ  
UNITED KINGDOM  
Tel. + 44 1461 207 510

### PONSSE NORTH AMERICA, INC.

4400 International Lane  
Rhineland, WI 54501  
USA  
Tel. +1 715 369 4833



PONSSE Harvester Heads 2/25 1. EN Copyright © 2025 Ponsse Plc.  
PONSSE is a registered trademark of Ponsse Plc and other product names are trademarks of Ponsse Plc.  
Images are for illustration purposes only. The manufacturer reserves the right to make technical changes and improvements.