

**PONSSE**



# **MAMMOTH**

**PONSSE**

**SOLUTIONS**



**SUSTAINABLE SOLUTIONS FOR THE BENEFIT  
OF OUR CUSTOMERS AND ENVIRONMENT**



PONSSE

SOLUTIONS



SUSTAINABLE SOLUTIONS FOR THE BENEFIT  
OF OUR CUSTOMERS AND ENVIRONMENT

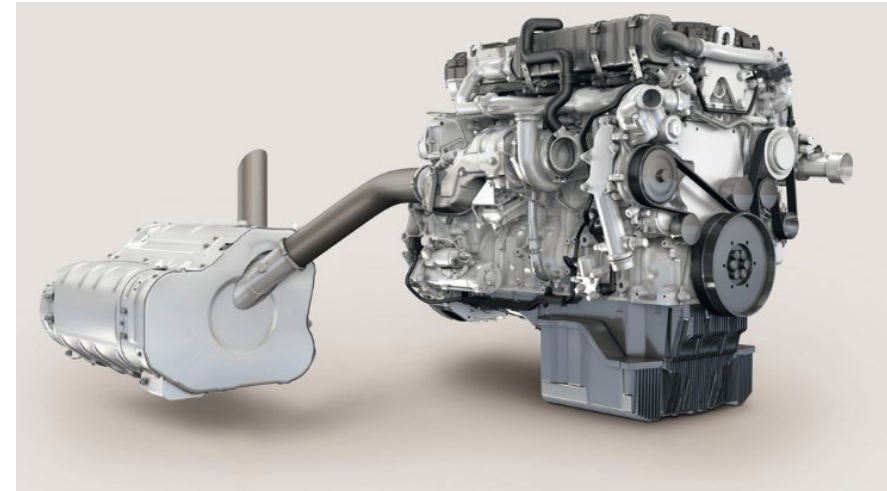
- Ponsse Mammoth is our biggest product for forwarding solutions, offering our customers a great opportunity to work in even more demanding conditions, with Ponsse Mammoth our customers will be able to achieve a higher productivity ( $m^3/h$ ) with a lower fuel consumption ( $l/m^3$ ).
- Ponsse Mammoth is able to handle a total capacity 25T of payload, thanks to a more robust frame design, bogies and transmission.
- The CVT transmission has an extraordinary power output and smooth driving experience.
- Our known Stage V engine supplies the power demand from the transmission at any moment, thanks to the great torque at lower Rpm.
- Ponsse K121 Crane to fulfill the high demand in the tough conditions, brings the operator de confidence to handle the loads at any time.



# Engine Options

## Option 1

- Mercedes-Benz/MTU OM936 LA StageV
- Engine capacity 7,7 l
- Max. output 210 kW (285hp)
- Max. torque 1200 Nm (1200-1600rpm)
- New, one-box type exhaust aftertreatment unit.
- New fuel filter module.
- Camshaft phasing for DPF regeneration
- HC doser for DPF regeneration



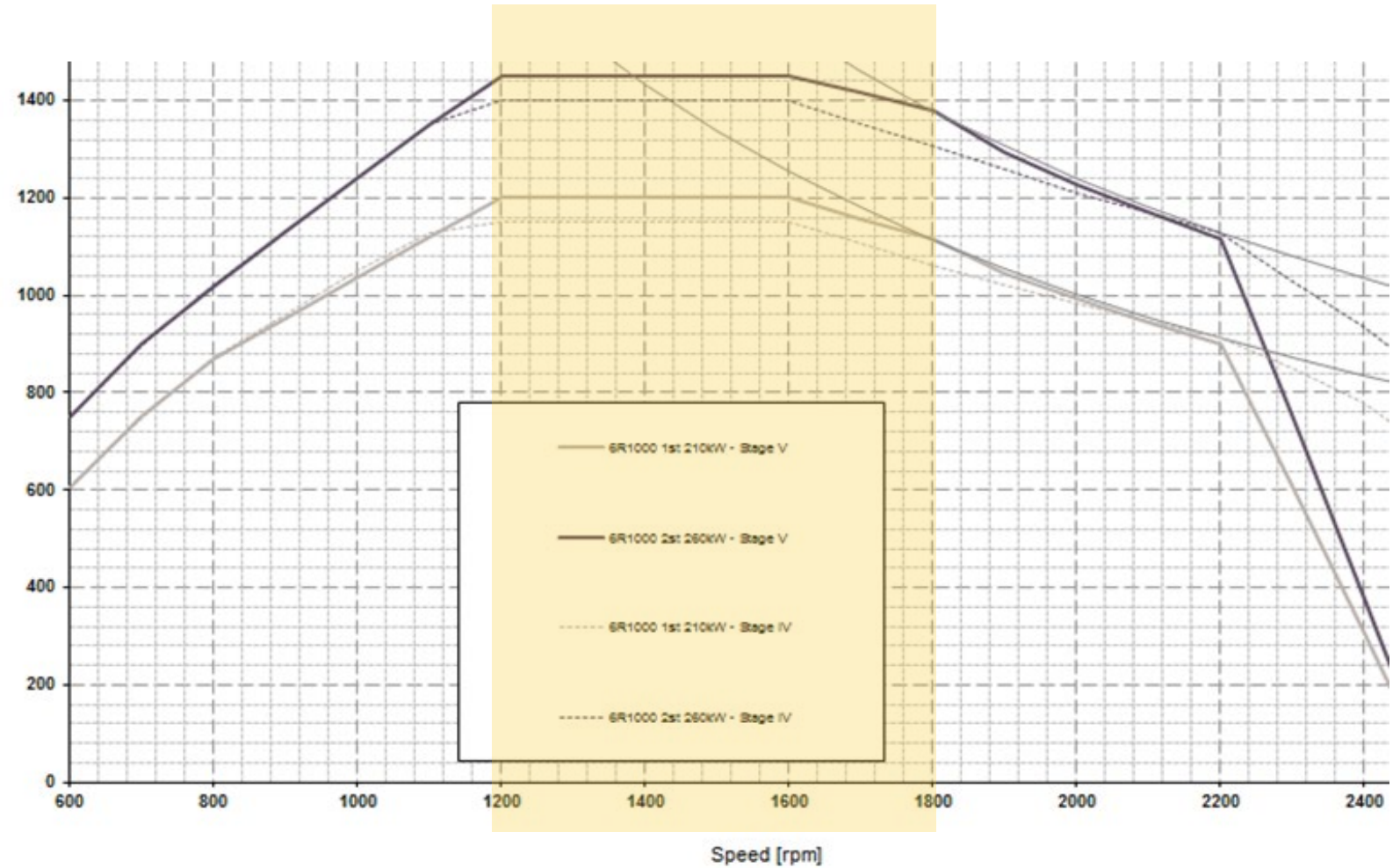
## Option 2

- Mercedes-Benz/MTU OM 926 LA.E3A/2
- Engine capacity 7,2 l
- Max. output 220 kW (295hp)
- Max. torque 1200 Nm (1300-1600rpm)



# Engine

- More torque at lower Revs.



SUSTAINABLE SOLUTIONS FOR THE BENEFIT OF OUR CUSTOMERS AND ENVIRONMENT

# Exhaust aftertreatment Stage V

## DOC (Diesel Oxidation Catalyst)

- Designed to oxidize exhaust and convert carbon monoxide (CO) and hydrocarbons into carbon dioxide (CO<sub>2</sub>) and water (H<sub>2</sub>O)

## DPF (Diesel Particulate Filter):

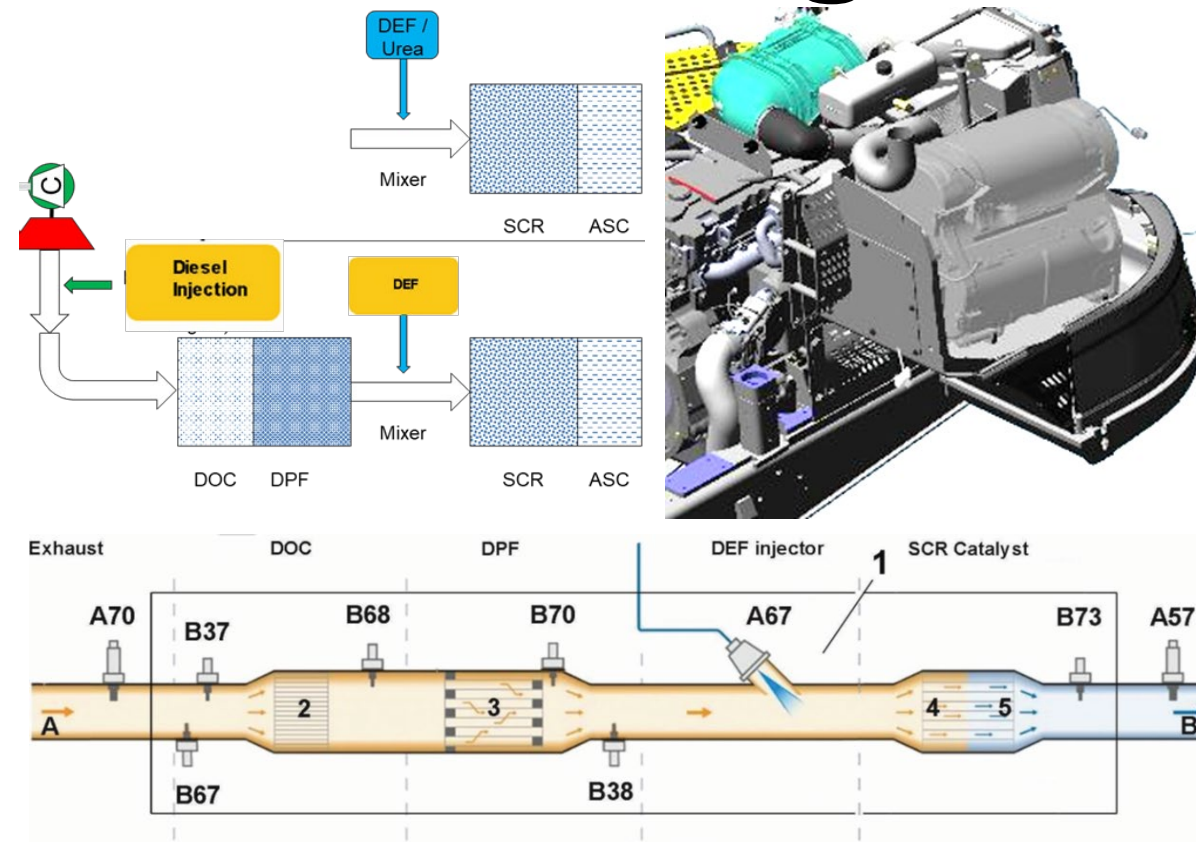
- The particulate filter reduces soot emissions to an absolute minimum.

## SCR (Selective Catalytic Reduction):

- An aqueous urea solution (DEF, AdBlue) is injected into the exhaust system.
- Converts the harmful nitrogen oxides into harmless nitrogen, carbon dioxide and water vapor.

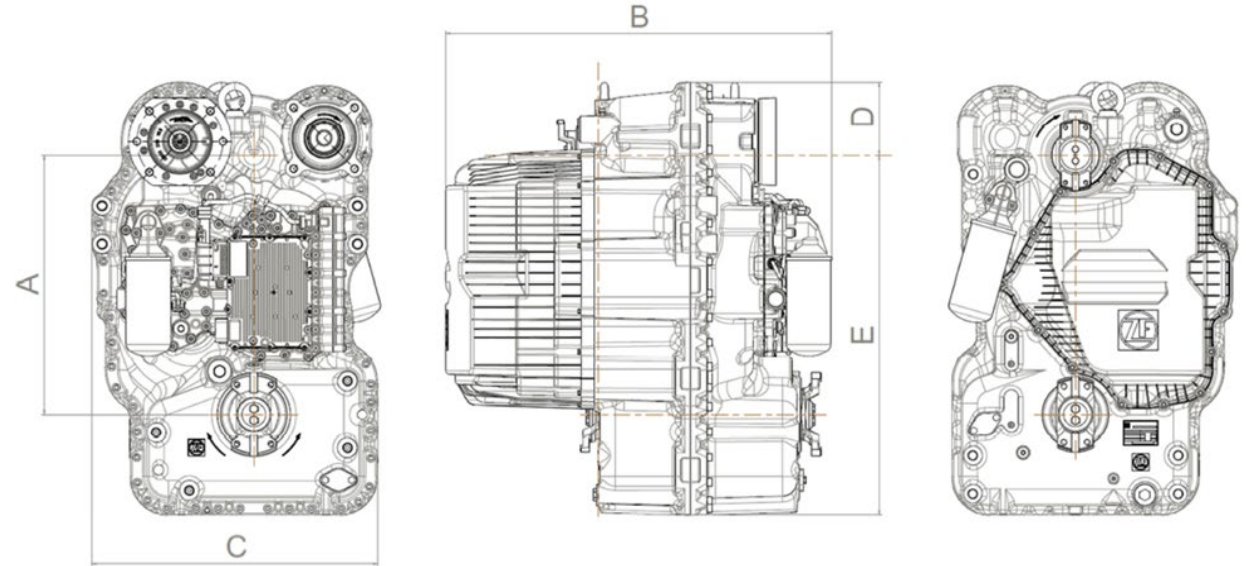
## ASC (Ammonia Slip Catalyst)

- Eliminating traces of Ammonia (NH<sub>3</sub>).
- Neutralizing of Ammonia is mandatory, since Ammonia is also an emission regulated gas.



# ZF CVT CP290 TECHNICAL INFORMATION

Transmission	CP 230	CP 290
Drop	540 mm	575 mm
Installation	separate	separate
Approx. dry mass (with brake)	586 kg	758 kg
Hydraulic units	160 cm <sup>3</sup> /U	233 cm <sup>3</sup> /U
Numbers of ranges	2	2
n engine (limited)	1800 1/min	1800 1/min
PTO 1 – max. size	C	C
PTO 2 – max. size a)	„S” C; „A” D	„S” C; „A” D
PTO 1 - speed	2300 1/min	2200 1/min
PTO 2 - speed	2550 1/min	2200 1/min
PTO – max. torque b)	700 Nm	1200 Nm



Dimensions	Unit	CP 190 - 230	CP 260 - 330
A	mm	540	575
B	mm	810	905
C	mm	605	630
D	mm	155	245
E	mm	750	790



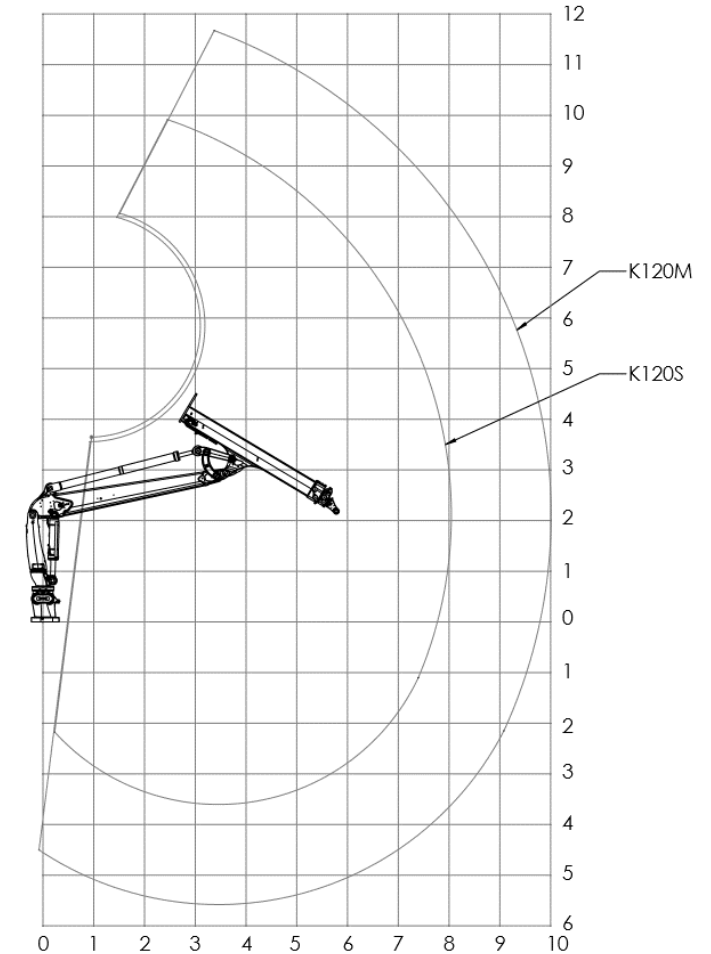
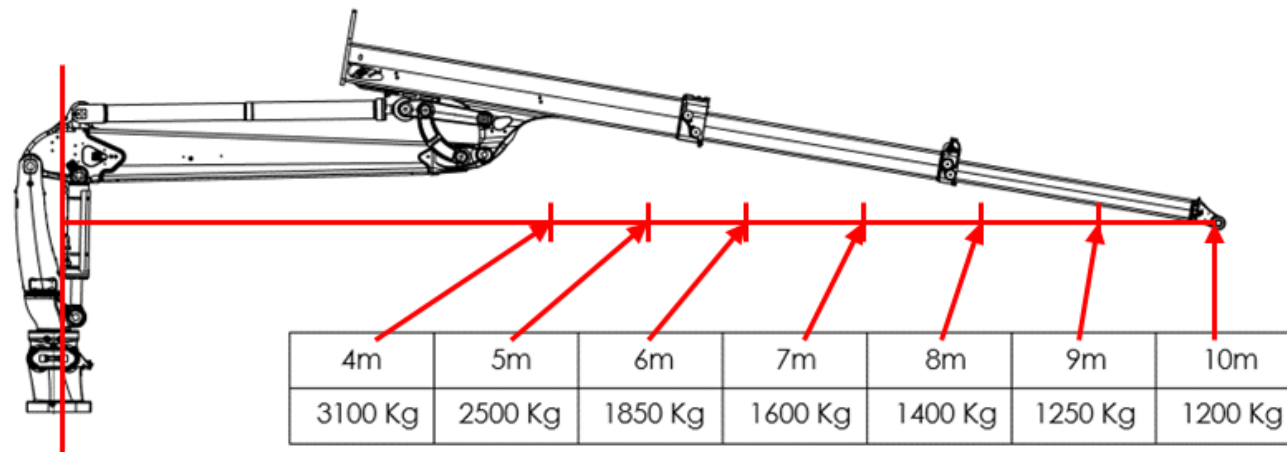
**SOLUTIONS**



**SUSTAINABLE SOLUTIONS FOR THE BENEFIT  
OF OUR CUSTOMERS AND ENVIRONMENT**

# Loader

- **Ponsse K121 Loader**
  - M- and S-models
  - Slewing torque 48 kNm
  - Lifting moment 195 kNm
  - Tilt base option, Tilt angle 12°/24°
  - Max. hydraulic pressure 265 bar



**SUSTAINABLE SOLUTIONS FOR THE BENEFIT OF OUR CUSTOMERS AND ENVIRONMENT**

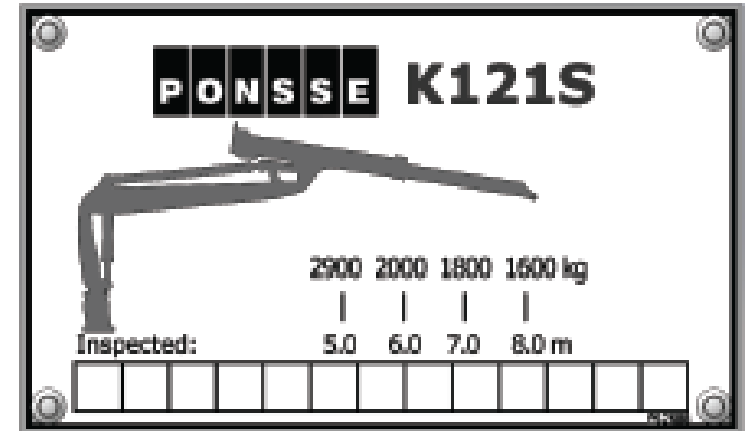
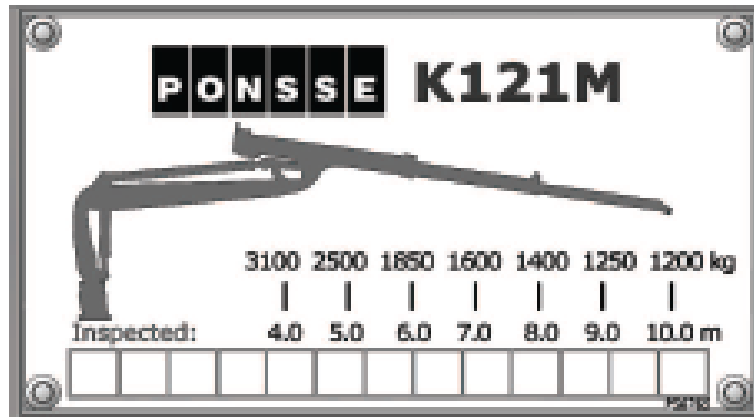


# Loader

## Range and lifting moment:

1. Lifting power 10m 1200 kg (Gross)
2. Range K121M 10m and K121S 8.1m

	K121S+	K121M+
Lifting torque, gross	195 kNm (143 825 lb-ft)	
Rotating moment	48 kNm (35 403 lb-ft)	
Turning angle	360°	
Max reach	8.1 m (25.6 ft)	10 m (32.8 ft)
Weight without oil	2950 kg (6504 lbs)	3100 kg (6834 lbs)
Operating pressure	26.5 MPa (3843 PSI)	
Oil flow rate	220-300 l/min (48.3-65.9 gal/min UK) (58-79 gal/min US)	



# Cabin

PONSSE CABIN offers a viewpoint to the latest forest machine technology. It provides a working environment for skilled professionals who value comfort, safety and ergonomics. The ergonomics of the controls represent the cutting edge of forest machines and, thanks to the large cabin, wide windows and thin window pillars, the visibility from the cabin is excellent in all directions. The PONSSE Comfort forest machine user interface has been developed together with operators and it utilizes years of experience.



# Cabin / Comfort

- A lot of storage space
- High-quality materials
- Easy cleaning of floor (rubber matting with lifted edges)
- Optional soft carpet
- Seat in the center – symmetric leg space to both directions
- Pedal locations optimized
- Space for optional food heater (under dashboard)
- Front sun curtain comes from top – can be partially lowered
- Stretching bar in cabin roof



# Cabin / Storage

- Mesh pockets in right wall
- Larger roof compartment
- Uniform compartment in the front (felt)
- Compartment in the door
- Spaces for smaller items in the right wall
- Integrated mug holder



# Serviceability



## SERVICE LIGHTS

Service lights are located in the bumper casings and under the cabin and engine cover.



## EASY ACCESSIBILITY

Batteries, Webasto heating systems, the central lubrication unit, electrical centre, pneumatic connectors and measuring points are easily accessible under opening bumper casings.



## STORAGE SPACE FOR ACCESSORIES

The machine provides plenty of storage space for tools and accessories in various locations.



## CLARITY FOR MAINTENANCE

Machine designs have been clarified and machine models standardised. In addition, an owner's manual and a service book are always delivered with the machine.



## INSPECTION POINTS

Daily checks are easy to perform without climbing or stretching.



## SERVICE PLATFORMS AND STEPS

The anti-slip service platforms and attachments of the service steps enable easier and safer maintenance procedures.



## DIMENSIONS

Length:	10 790 – 11 940 mm (w/o glide bunk)
Width:	3168 mm-3298 mm
Transportation height (Max):	4020 mm
Ground Clearance:	770 mm
Weight:	28,5tons/~32 tons in working condition

## LOAD SPACE

Load capacity	25T
Load space cross section	6,8 m <sup>2</sup> or 8,0 m <sup>2</sup> (Mechanical VLA)
Load space length	4 950 mm – 6 100 mm

## LOADER

Model:	K121 M or K121S
Lifting moment:	195 kNm
Reach:	10 m or 8.1 m

## DRIVETRAIN

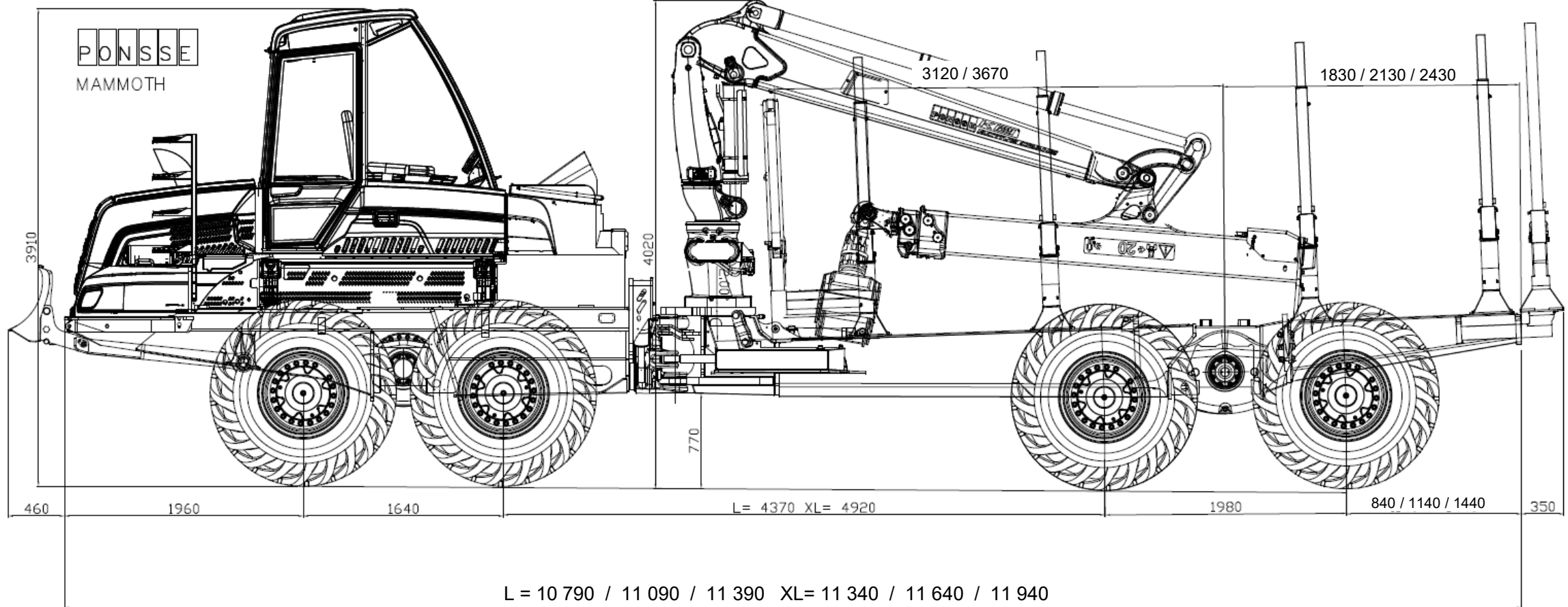
Transmission:	CVT
Axles:	Portal type balanced bogies
Tires:	780/50-28.5

## ENGINE

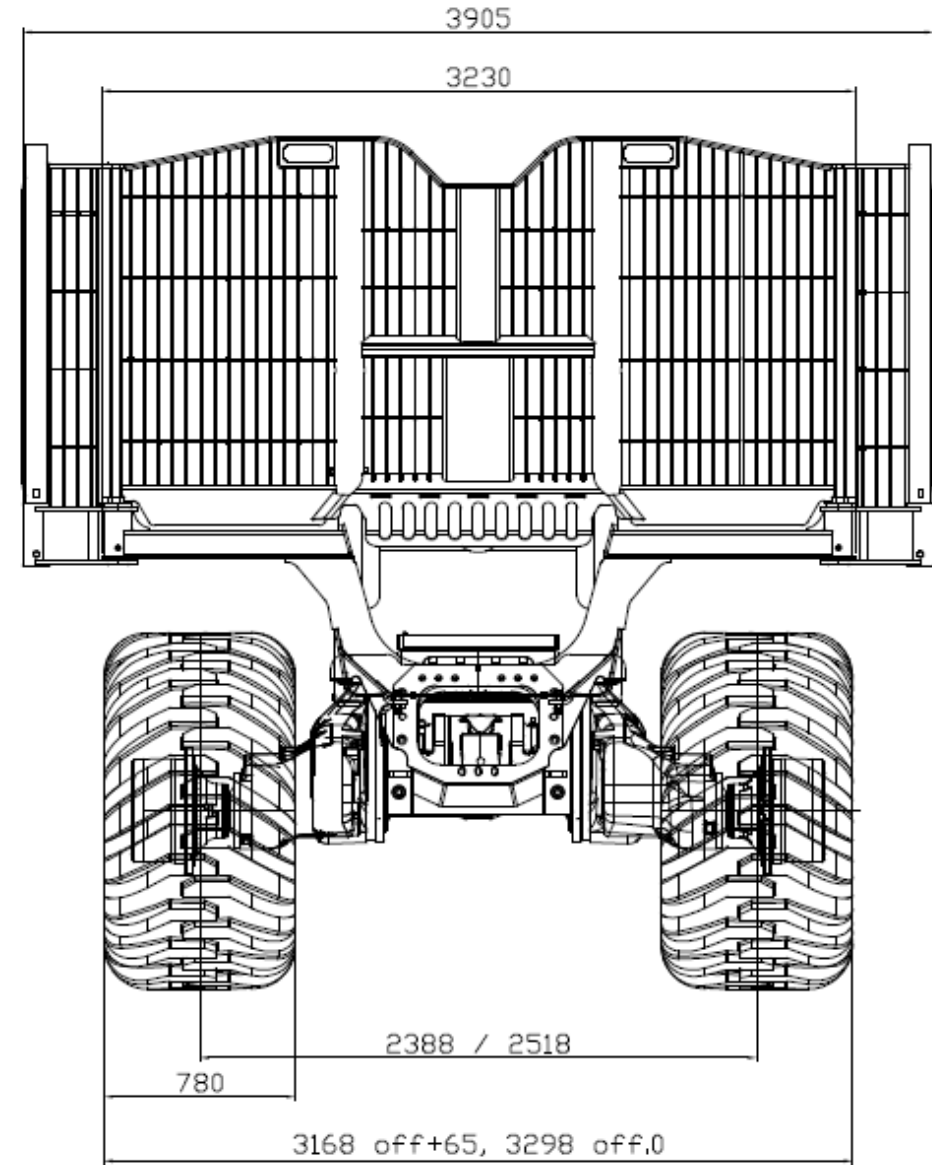
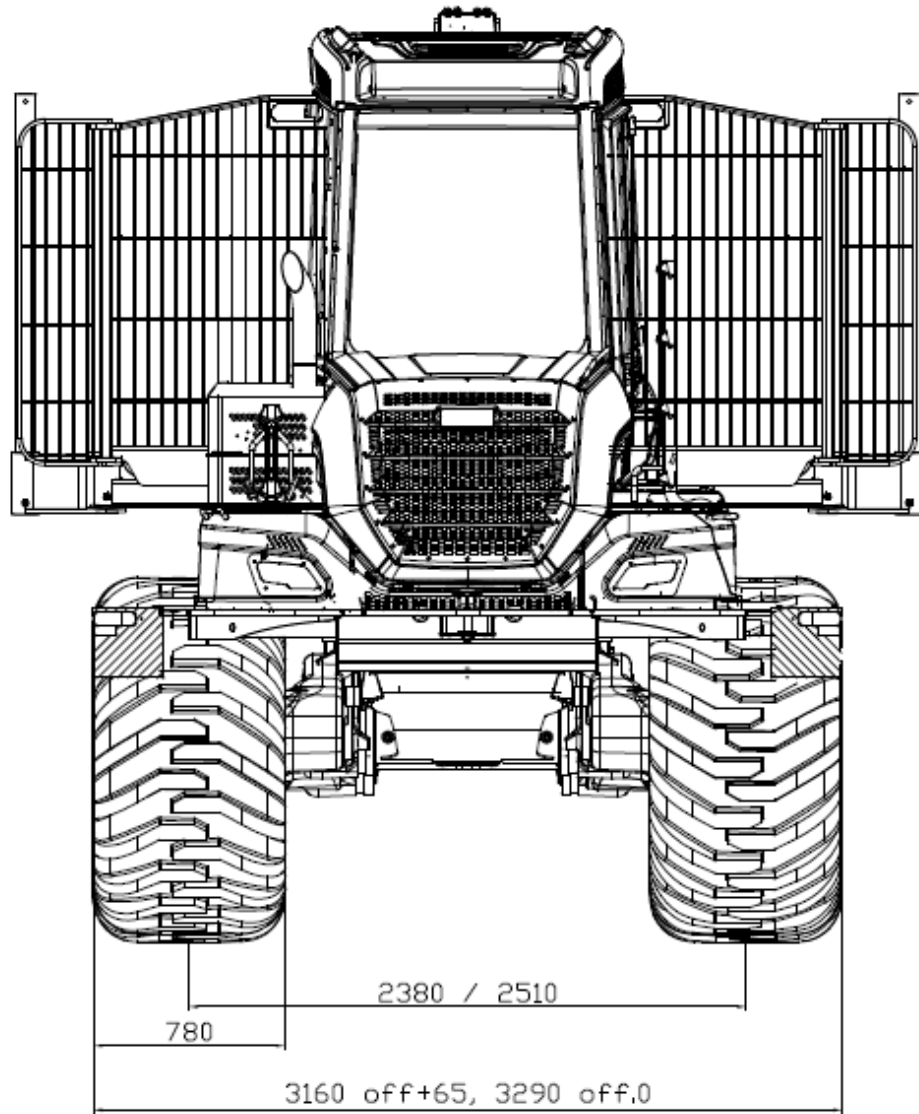
Model:	MB OM936 LA (EU Stage V) MB OM936 LA (Dual Certification) MB OM926LA (3A)
Power:	MB OM936 LA (EU Stage V) 210 kW MB OM936 LA (Dual Certification) 210 kW MB OM926LA (3A) 220 kW
Torque:	MB OM936 LA (EU Stage V) 1200 Nm 1200 – 1600 Rpm MB OM936 LA (D.C) 1200 Nm 1200 – 1600 Rpm MB OM926LA (3A) 220 kW
Pulling power:	320kN
Fuel Tank Capacity:	265 l

## HYDRAULIC SYSTEM

Control system	Ponsse OptiControl / Opti4G
Working pump	2x 112cc
Oil tank capacity	90 l

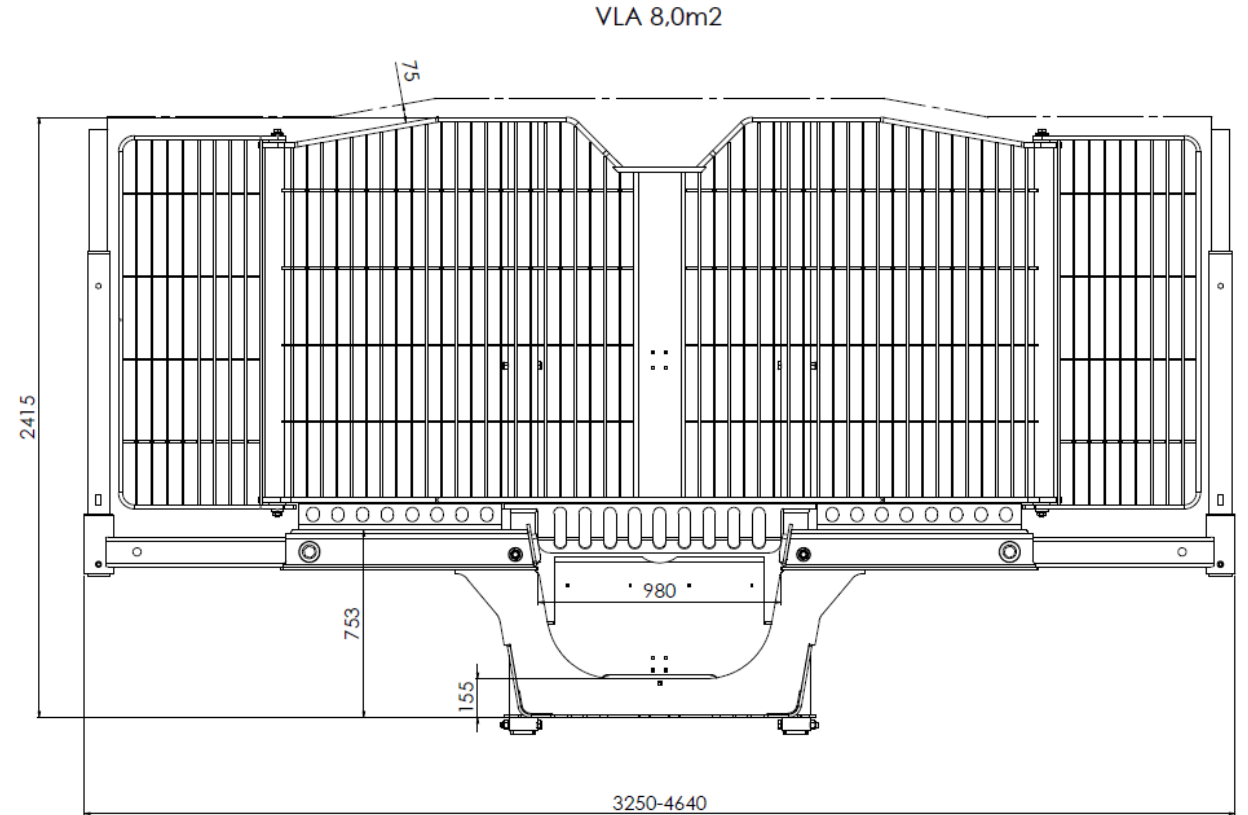
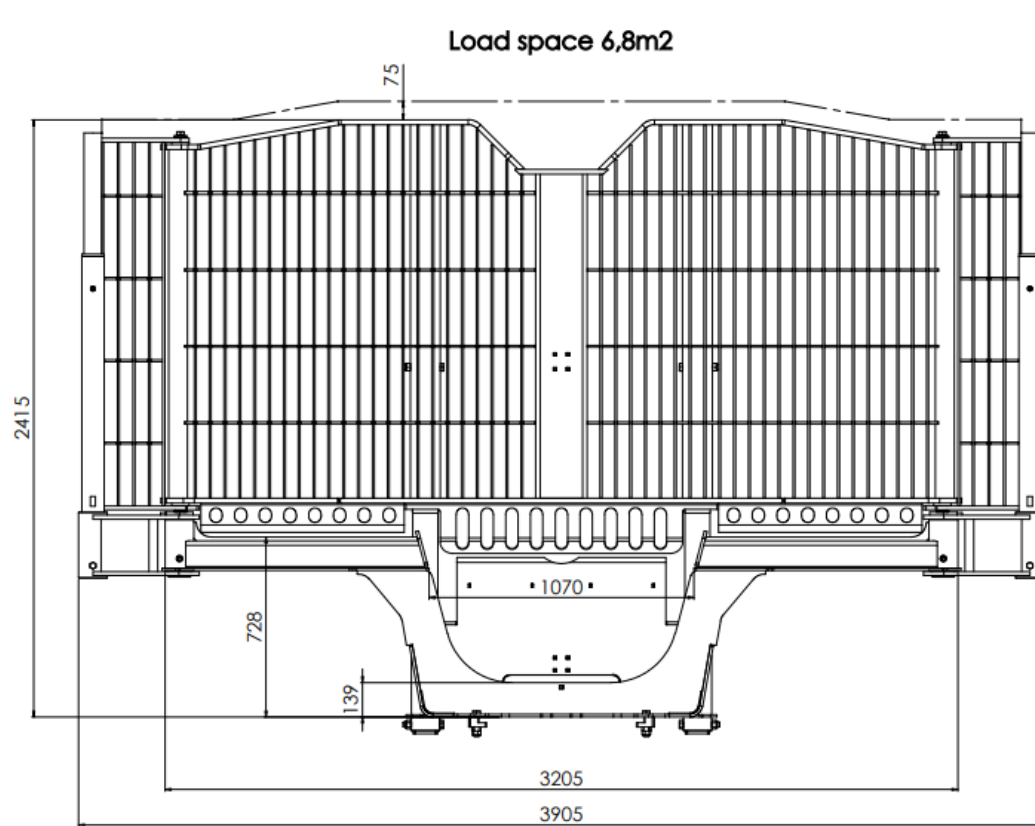


SUSTAINABLE SOLUTIONS FOR THE BENEFIT  
OF OUR CUSTOMERS AND ENVIRONMENT





# Technical Data / Load Spaces

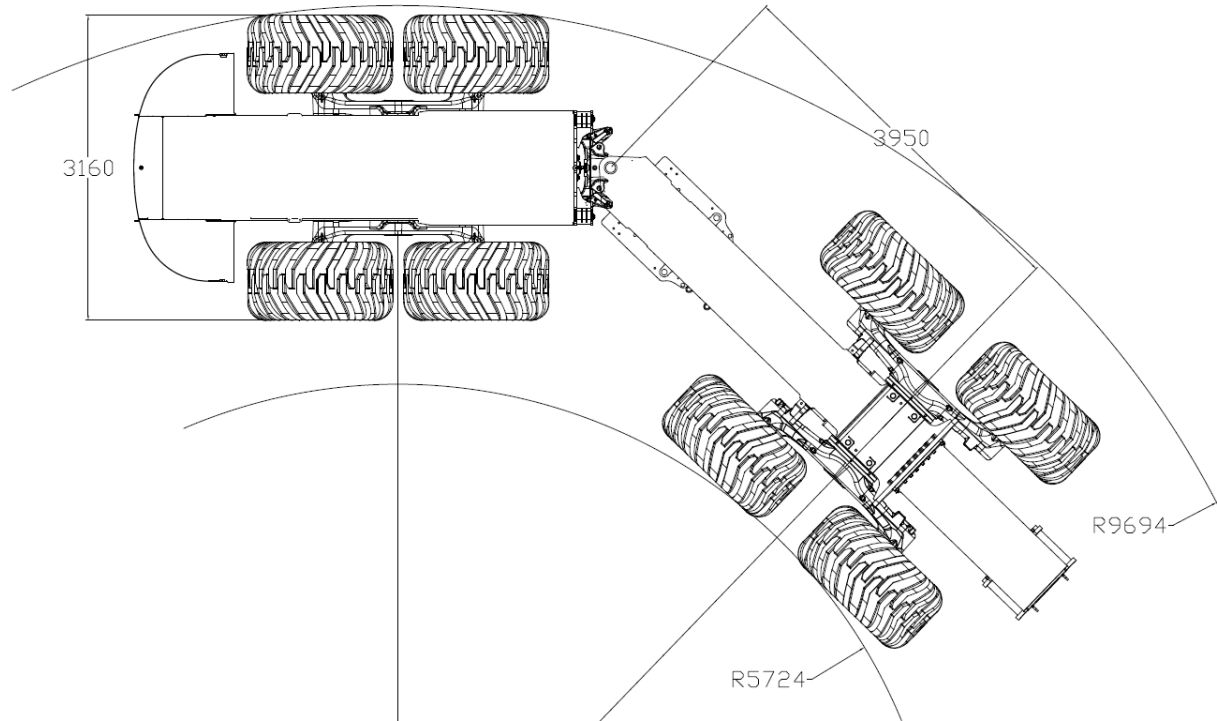


Both load spaces with lifting screen as a standard

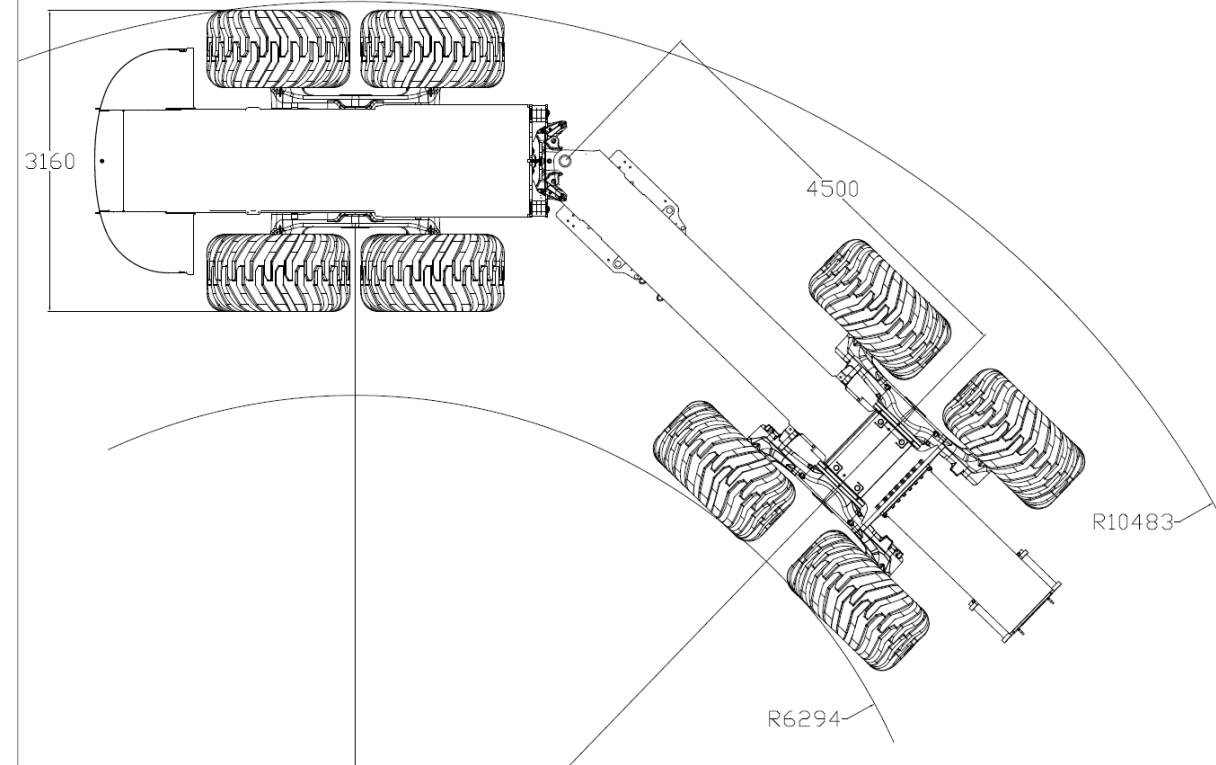


SUSTAINABLE SOLUTIONS FOR THE BENEFIT  
OF OUR CUSTOMERS AND ENVIRONMENT

# Technical Data / Turning Radius



3950 Frame +65 offset



4500 Frame +65 offset

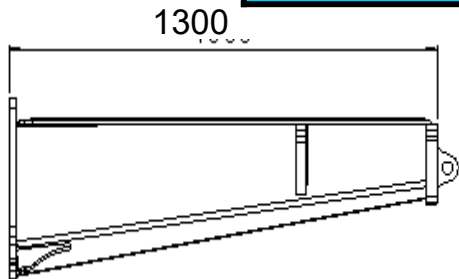


SUSTAINABLE SOLUTIONS FOR THE BENEFIT  
OF OUR CUSTOMERS AND ENVIRONMENT

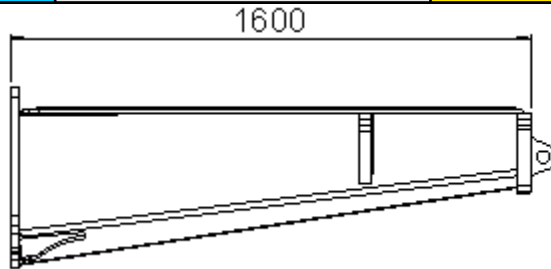
# PONSSE Mammoth

## LOAD AREA LENGTH WITH DIFFERENT OPTIONS

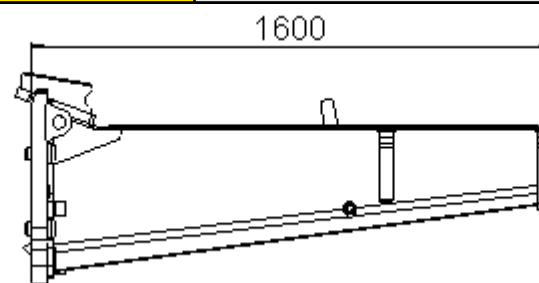
REAR FRAME EXTENSION 4 OPTIONS	LOAD AREA LENGTH WITH DIFFERENT FRAME OPTIONS, REAR FRAME EXTENSION OPTIONS AND GLIDE BUNK			
	Short rear frame 3950 mm without glide bunk	Short rear frame 3950 mm + glide bunk 700 mm	Long rear frame 4500 mm without glide bunk	Long rear frame 4500 mm + glide bunk 700 mm
(A) Short rear frame extension 1300 mm	4950 mm	5300 mm – 5650 mm	5500 mm	5850 mm – 6200 mm
(B, C) Standard, Dual rear frame extension 1600 mm	5250 mm	5600 mm – 5950 mm	5800 mm	6150 mm – 6500 mm
(D) Long rear frame extension 1900 mm	5550 mm	5900 mm – 6250 mm	6100 mm	6450 mm – 6800 mm



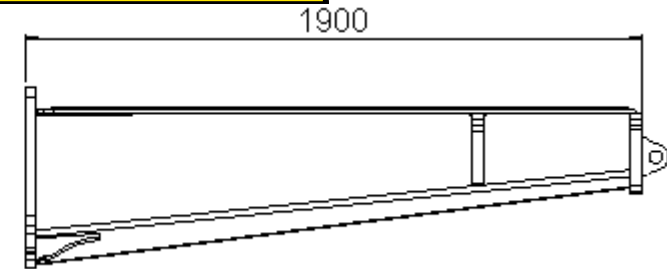
(A) Short rear frame extension



(B) Standard rear frame extension



(C) Dual rear frame extension



(D) Long rear frame extension



SUSTAINABLE SOLUTIONS FOR THE BENEFIT OF OUR CUSTOMERS AND ENVIRONMENT



# Machine Width and Maximum Track Width

<b>Bogie PO132 rear/PO133 front</b>	<b>Rim Offset +65 mm</b>	<b>Rim Offset 0 mm</b>
<b>Wheel</b>	780/50-28.5	780/50-28.5
<b>Machine width (order sheets)</b>	3168 mm	3298 mm
<b>Max. track width</b>	1016 mm	1146 mm

# Ground Pressure



## Mammoth

Tracks	Front	Rear 25 ton load
No Tracks	87 kPa	161 kPa
Width 916 mm	45 kPa	71 kPa

## Comparison:

### Elephant King

Tracks	Front	Rear 20 ton load
No tracks	72 kPa	120 kPa
Width 916 mm	37 kPa	60 kPa

### Buffalo 8W

Tracks	Front	Rear 15 ton load
No tracks	72 kPa	107 kPa
Width 916 mm	37 kPa	52 kPa



# Mammoth vs Tigercat 1085C

	Mammoth	Tigercat 1085C		Mammoth	Tigercat 1085C
Length	11 400 mm	11 420 mm	Loader	K121 M or S	Tigercat F195T85 with telescopic stick
Width	3168mm-3298mm	3320-3350mm	Reach	10m or 8m	8,5 m
Weight	28,500 kg	29,750 kg	Lifting Torque	195 kN-m	195 kN-m
Tires	28.5"	28.5"	Slew Torque	48 kN-m	55 kN-m
Engine	Stage V 210kW OM926LA 3A 220 kW	Tigercat FPT N67 226kW Tigercat FPT N67 205kW	Capacity	25 Ton	25 Ton
Transmission	CVT CP290	Tigercat wideRANGE® drive Variable speed hydrostatic (2) piston motors, infinitely variable			
Top Speed	20 kph	7,6 kph			



***WE DO  
WHAT WE PROMISE***

“Machine users are the best experts,  
so we always listen to them.”

***-EINARI VIDGRÉN***

