

SPECIFICATIONS

HX160A L

Powered By Cummins Performance Series Engine



Net Power
152 HP (113 kW)
/ 2,200 rpm

Standard Bucket
.73 m³ / .95 yd³

Operating Weight
39,010 LBS (17,695 kg)

| ENGINE | |
|----------------------------|--|
| Maker / Model | Cummins B4.5 |
| Type | Tier 4F/ Stage V Emission Certified, 4 cylinder diesel engine with No Manual Regeneration. |
| Rated flywheel horse power | J1995 (gross) |
| | J1349 (net) |
| SAE | 115 kW (155 HP) at 2,200 rpm |
| Max. torque | 113 kW (152 HP) at 2,200 rpm |
| Peak torque | 115 kW (155 hp) at 2,000 rpm |
| Displacement | 712 N·m (525 lb·ft) at 1,200 rpm |
| | 4.5 ℓ (275 cu in) |

| HYDRAULIC SYSTEM | |
|------------------|--|
| MAIN PUMP | |
| Type | Variable displacement tandem axis piston pumps |
| Max. flow | 2 × 160 lpm (42.3 U.S. gpm) |

| AUXILIARY PRESSURE | |
|--------------------|----------------|
| 2 Way | Flow (l/min) |
| | Pressure (bar) |
| Rotating | Flow (l/min) |
| | Pressure (bar) |

| PILOT PUMP | |
|------------|---|
| Type | Fixed displacement gear pump single stage |
| Max. flow | 29 ℓ/min (7.7 U.S. gpm) |

| HYDRAULIC MOTORS | |
|------------------|--|
| Travel | Variable displacement axial piston motor |
| Swing | Fixed displacement axial piston motor |

| RELIEF VALVE SETTING | |
|-----------------------------------|-------------------------------------|
| Implement circuits | 350 kgf/cm ² (4,980 psi) |
| Travel | 350 kgf/cm ² (4,980 psi) |
| Power boost (Boom, Arm, Bucket) | 380 kgf/cm ² (5,410 psi) |
| Swing circuit | 285 kgf/cm ² (4,060 psi) |
| Pilot circuit | 40 kgf/cm ² (569 psi) |
| Service valve | Installed |

| HYDRAULIC CYLINDERS | |
|---------------------|--------------------------|
| No. of Cylinder | Boom : 2-∅115 × 1,090 mm |
| Bore X Stroke | Arm :1-∅120 × 1,355 mm |
| | Bucket : 1-∅110 × 995 mm |
| | Blade : 2-∅110 × 320 mm |

* Hyundai Bio Hydraulic Oil (HBHO) available.

| DRIVES & BRAKES | |
|--------------------------------|---|
| Drive method | Fully hydrostatic type |
| Drive motor | Axial piston motor, in-shoe design |
| Reduction system | Planetary reduction gear |
| Max. Drawbar pull | 16,700 kgf (36,820 lbf) |
| Max. Travel speed (High / Low) | 3.1 km/hr (1.9 mph) / 5.4 km/hr (3.4 mph) |
| Gradeability | 35° (70%) |
| Parking brake | Multi wet disc |

| CONTROL | |
|---|--|
| Pilot pressure operated joysticks and pedals with detachable lever provide almost effortless and fatigueless operation. | |
| Pilot control | Two joysticks with one safety lever (LH) : Swing and arm, (RH) : Boom and bucket |
| Traveling and Steering | Two levers with pedals |
| Engine throttle | Electric, dial type |

| OPERATING WEIGHT (APPROXIMATE) | |
|---|--|
| Operating weight, including 5.1 m (16' 9") boom, 2.6 m (8' 6") arm, SAE heaped 0.73 m ³ (0.95 yd ³) bucket, lubricant, coolant, full fuel tank, full hydraulic tank, and all standard equipment. | |

| OPERATING WEIGHT | | | | |
|------------------|---------------|------------------|-----------------|-----------------------------|
| Shoes | | Operating Weight | | Ground Pressure |
| Type | Width mm (in) | kg (lb) | | kgf / cm ² (psi) |
| Triple grouser | 500 (20") | HX160A L | 17,455 (38,480) | 0.51 (7.24) |
| | | HX160A L Dozer | 18,540 (40,870) | 0.54 (7.69) |
| | 600 (24") | HX160A L | 17,695 (39,010) | 0.43 (6.12) |
| | | HX160A L Dozer | 18,775 (41,390) | 0.46 (6.49) |
| | 700 | HX160A L | 17,945 (39,560) | 0.37 (5.32) |
| | | HX160A L Dozer | 19,050 (42,000) | 0.40 (5.64) |

| SWING SYSTEM | |
|---------------------------|---------------------------------------|
| Swing motor | Fixed displacement axial piston motor |
| Swing reduction | 2 - stage planetary |
| Swing bearing lubrication | Grease-bathed |
| Swing brake | Multi wet disc |
| Swing speed | 10.3 rpm |

| COOLANT & LUBRICANT CAPACITY | | |
|-----------------------------------|--------|-------|
| | US gal | liter |
| Fuel tank | 76.6 | 290 |
| Engine coolant | 6.1 | 23 |
| Engine oil | 2.9 | 11 |
| Swing device | 1.6 | 6.2 |
| Final drive (Each) | 1.6 | 6 |
| Hydraulic system (Including tank) | 59.4 | 225 |
| Hydraulic tank | 33.0 | 125 |
| Def/Adblue® | 9.2 | 35 |

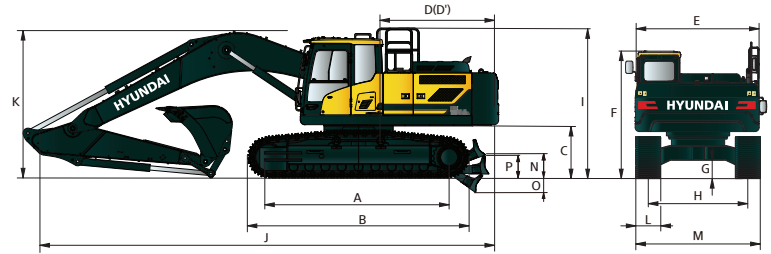
| UNDERCARRIAGE | |
|--|--|
| The X-leg type center frame is integrally welded with reinforced box-section track frames. The undercarriage includes lubricated rollers, idlers, track adjusters with shock absorbing springs and sprockets, and a track chain with double or triple grouser shoes. | |

| Center frame | X-Leg Type |
|---------------------------|---------------------|
| Track frame | Pentagonal Box Type |
| No. of Shoes on each side | 49 |
| No. of Carrier roller | 2 x 2 |
| No. of Track roller | 2 x 7 |
| No. of Rail guard | 2 x 1 |

| CAB NOISE LEVEL | |
|--|----------|
| Guaranteed noise level presented below can be differed depending on a range of factors such as operating condition, speed of a cooling fan, types of engine and so forth. Hearing protection may be necessary if an operator is working in the improperly airtained cabin or exposed to a noisy environment by leaving doors and/or windows open. With cooling fan speed at maximum value: | |
| Operator sound pressure level (ISO 6396:2008) | 71 dB(A) |
| Exterior sound power level (ISO 6395:2008) | 99 dB(A) |
| * Distance of 15 m (49.2 ft), moving forward in second gear ratio | |

SPECIFICATIONS HX160A L

Powered By Cummins Performance Series Engines



HX160A DIMENSIONS

Unit: ft-in (mm)

5.10 m (16' 9") BOOM and 2.20 m (7' 3"), 2.60 m (8' 6"), 3.10 m (10' 2") ARM

| | | |
|---------------------------------------|---------|---------|
| A Tumbler Distance | 10' 5" | (3,170) |
| B Overall Length of Crawler | 12' 10" | (3,910) |
| *C Ground Clearance of Counter Weight | 3' 6" | (1,060) |
| D Tail Swing Radius | 8' 2" | (2,490) |
| D' Rear-End Length | 8' 2" | (2,490) |
| E Overall Width of Upper Structure | 8' 1" | (2,475) |
| *F Overall Height of Cab | 9' 9" | (2,980) |
| *G Min. Ground Clearance | 1' 6" | (460) |
| H Track gauge | 6' 6" | (1,990) |
| *I Overall Height of Guardrail | 10' 8" | (3,250) |

* This figure includes the size of grouser.

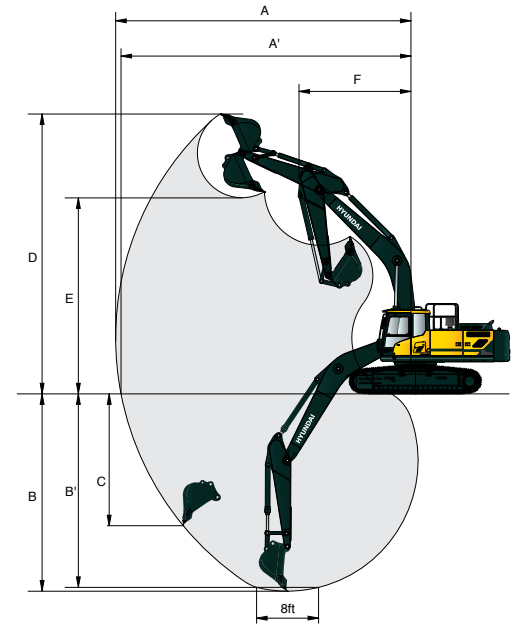
** With dozer blade option

| | | | |
|----------------------------------|----------------|----------------|---------------------|
| Boom Length | 5,100 (16' 9") | | |
| Arm Length | 2,200 (7' 3") | 2,600 (8' 6") | 3,100 (10' 2") |
| J Overall Length | 8,660 (28' 5") | 8,650 (28' 5") | 8,670 (28' 5") |
| *K Overall Height of Boom | 3,040 (10' 0") | 3,030 (9' 11") | 3,195 (10' 6") |
| L Track Shoe | 500 (20") | 600 (24") | 700 (28") 800 (32") |
| M Overall Width | 2,490 (8' 2") | 2,590 (8' 6") | 2,690 (8' 10") - |
| **N Ground clearance of blade up | 615 (2' 0") | | |
| **O Depth of blade down | 670 (2' 2") | | |
| **P Height of blade | 640 (2' 1") | | |

HX160A WORKING RANGE

Unit: ft-in (mm)

| | | | |
|--------------------------------------|----------------|-----------------|-----------------|
| Boom Length | 5,100 (16' 9") | | |
| Arm Length | 2,200 (7' 3") | 2,600 (8' 6") | 3,100 (10' 2") |
| A Max. Digging Reach | 8,690 (28' 6") | 9,020 (29' 7") | 9,450 (31' 0") |
| A' Max. Digging Reach on Ground | 8,530 (28' 0") | 8,860 (29' 1") | 9,300 (30' 6") |
| B Max. Digging Depth | 5,630 (18' 6") | 6,030 (19' 9") | 6,530 (21' 5") |
| B' Max. Digging Depth (8' Level) | 5,410 (17' 9") | 5,825 (19' 1") | 6,340 (20' 10") |
| C Max. Vertical Wall Digging Depth * | 3,410 (11' 2") | 3,600 (11' 10") | 3,845 (12' 7") |
| D Max. Digging Height | 8,670 (28' 5") | 8,750 (28' 8") | 8,880 (29' 2") |
| E Max. Dumping Height | 6,140 (20' 2") | 6,250 (20' 6") | 6,410 (21' 0") |
| F Min. Swing Radius | 3,180 (10' 5") | 3,170 (10' 5") | 3,160 (10' 4") |



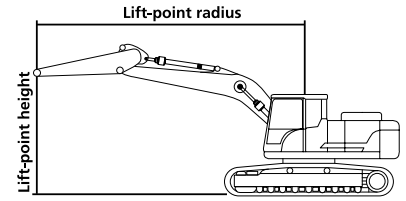
HX160A DIGGING FORCE

| Boom | Length | mm (ft-in) | 5,100 (16' 9") Mono Boom | | | Remark |
|----------------------|--------|------------|--------------------------|-----------------|-----------------|------------------|
| | Weight | kg (lb) | 1,277 (2,810) | | | |
| Arm | Length | mm (ft-in) | 2,200 (7' 3") | 2,600 (8' 6") | 3,100 (10' 2") | |
| | Weight | kg (lb) | 807 (1,780) | 860 (1,900) | 888 (1,960) | |
| Bucket Digging Force | SAE | kN | 108.0 [117.0] | 108.0 [117.0] | 108.0 [117.0] | |
| | | kgf | 10,987 [11,930] | 10,004 [11,950] | 11,006 [11,950] | |
| | | lbf | 24,222 [26,301] | 24,259 [26,345] | 24,264 [26,345] | |
| | ISO | kN | 126.0 [137.0] | 126.0 [137.0] | 126.0 [137.0] | |
| | | kgf | 12,872 [13,980] | 12,892 [14,000] | 12,894 [14,000] | |
| | | lbf | 28,379 [30,821] | 28,421 [30,865] | 28,427 [30,865] | |
| Arm Crowd Force | SAE | kN | 87.0 [95.0] | 77.0 [84.0] | 69.0 [75.0] | []: Power Boost |
| | | kgf | 8,889 [9,650] | 7,879 [8,550] | 7,035 [7,640] | |
| | | lbf | 19,596 [21,275] | 17,370 [18,850] | 15,510 [16,843] | |
| | ISO | kN | 92.0 [99.0] | 81.0 [88.0] | 72.0 [78.0] | |
| | | kgf | 9,339 [10,140] | 8,237 [8,940] | 7,314 [7,940] | |
| | | lbf | 20,590 [22,355] | 18,158 [19,709] | 16,124 [17,505] | |

Note : Boom weight includes arm cylinder, piping, and pin
Arm weight includes bucket cylinder, linkage, and pin

SPECIFICATIONS HX160AL

Powered By Cummins Performance Series Engines



Lifting Capacity (Without Dozer)

Boom: 5.1 m (16' 9")

Arm: 2.60 m (8' 6")

Shoe 600 mm (24") triple grouser

CWT 3,250 kg (7,170 lb)

Capacities based on North American Standard Configuration
in accordance with ISO condition 2 standard.

Rating over front

Rating over side or 360 degrees

| Lift-point height m (ft) | | Lift-point radius | | | | | | | | | | At max. reach | | |
|-----------------------------|----|-------------------|--------|----------------|--------|-----------------|--------|-----------------|-------|-----------------|------|---------------|--------|--------|
| | | 1.5 m (4.9 ft) | | 3.0 m (9.8 ft) | | 4.5 m (14.8 ft) | | 6.0 m (19.7 ft) | | 7.5 m (24.6 ft) | | Capacity | Reach | |
| | | | | | | | | | | | | | | m (ft) |
| 6.0 m | kg | | | | | | | *3040 | *3040 | | | *2120 | *2120 | 6.44 |
| 19.7 ft | lb | | | | | | | *6700 | *6700 | | | *4670 | *4670 | (21.1) |
| 4.5 m | kg | | | | | | | *3730 | *3730 | | | *2080 | *2080 | 7.25 |
| 14.8 ft | lb | | | | | | | *8220 | *8220 | | | *4590 | *4590 | (23.8) |
| 3.0 m | kg | | | *7920 | *7920 | *5290 | *5290 | *4260 | 3610 | *2820 | 2450 | *2170 | *2170 | 7.68 |
| 9.8 ft | lb | | | *17460 | *17460 | *11660 | *11660 | *9390 | 7960 | *6220 | 5400 | *4780 | *4780 | (25.2) |
| 1.5 m | kg | | | *6710 | *6710 | *6610 | 5330 | *4880 | 3420 | *3640 | 2370 | *2380 | 2220 | 7.79 |
| 4.9 ft | lb | | | *14790 | *14790 | *14570 | 11750 | *10760 | 7540 | *8020 | 5220 | *5250 | 4890 | (25.6) |
| Ground Line | kg | | | *6560 | *6560 | *7430 | 5060 | 5240 | 3270 | *3430 | 2310 | *2800 | 2260 | 7.61 |
| | lb | | | *14460 | *14460 | *16380 | 11160 | 11550 | 7210 | *7560 | 5090 | *6170 | 4980 | (25.0) |
| -1.5 m | kg | *5310 | *5310 | *9390 | *9390 | *7540 | 4960 | 5160 | 3210 | | | *3580 | 2490 | 7.10 |
| -4.9 ft | lb | *11710 | *11710 | *20700 | *20700 | *16620 | 10930 | 11380 | 7080 | | | *7890 | 5490 | (23.3) |
| -3.0 m | kg | *8650 | *8650 | *10160 | 9820 | *6880 | 5000 | *4800 | 3240 | | | *4560 | 3110 | 6.19 |
| -9.8 ft | lb | *19070 | *19070 | | 21650 | *15170 | 11020 | *10580 | 7140 | | | *10050 | 6860 | (20.3) |
| -4.5 m | kg | | | *7340 | *7340 | *4850 | *4850 | | | | | *4640 | *4640 | 4.63 |
| -14.8 ft | lb | | | *16180 | *16180 | *10690 | *10690 | | | | | *10230 | *10230 | (15.2) |

Lifting Capacity (Dozer Down)

Boom: 5.1 m (16' 9")

Arm: 2.60 m (8' 6")

Shoe 600 mm (24") triple grouser

CWT 3,250 kg (7,170 lb)

Capacities based on North American Standard Configuration
in accordance with ISO condition 2 standard.

Rating over front

Rating over side or 360 degrees

| Lift-point height m (ft) | | Lift-point radius | | | | | | | | | | At max. reach | | |
|-----------------------------|----|-------------------|--------|----------------|--------|-----------------|--------|-----------------|-------|-----------------|------|---------------|--------|--------|
| | | 1.5 m (4.9 ft) | | 3.0 m (9.8 ft) | | 4.5 m (14.8 ft) | | 6.0 m (19.7 ft) | | 7.5 m (24.6 ft) | | Capacity | Reach | |
| | | | | | | | | | | | | | | m (ft) |
| 6.0 m | kg | | | | | | | *3040 | *3040 | | | *2120 | *2120 | 6.44 |
| 19.7 ft | lb | | | | | | | *6700 | *6700 | | | *4670 | *4670 | (21.1) |
| 4.5 m | kg | | | | | | | *3730 | *3730 | | | *2080 | *2080 | 7.25 |
| 14.8 ft | lb | | | | | | | *8220 | *8220 | | | *4590 | *4590 | (23.8) |
| 3.0 m | kg | | | *7920 | *7920 | *5290 | *5290 | *4260 | 3810 | *2820 | 2610 | *2170 | *2170 | 7.68 |
| 9.8 ft | lb | | | *17460 | *17460 | *11660 | *11660 | *9390 | 8400 | *6220 | 5750 | *4780 | *4780 | (25.2) |
| 1.5 m | kg | | | *6710 | *6710 | *6610 | 5640 | *4880 | 3630 | *3640 | 2530 | *2380 | 2370 | 7.79 |
| 4.9 ft | lb | | | *14790 | *14790 | *14570 | 12430 | *10760 | 8000 | *8020 | 5580 | *5250 | 5220 | (25.6) |
| Ground Line | kg | | | *6560 | *6560 | *7430 | 5360 | *5330 | 3480 | *3430 | 2470 | *2800 | 2420 | 7.61 |
| | lb | | | *14460 | *14460 | *16380 | 11820 | *11750 | 7670 | *7560 | 5450 | *6170 | 5340 | (25.0) |
| -1.5 m | kg | *5310 | *5310 | *9390 | *9390 | *7540 | 5260 | *5410 | 3420 | | | *3580 | 2670 | 7.10 |
| -4.9 ft | lb | *11710 | *11710 | *20700 | *20700 | *16620 | 11600 | *11930 | 7540 | | | *7890 | 5890 | (23.3) |
| -3.0 m | kg | *8650 | *8650 | *10160 | *10160 | *6880 | 5300 | *4800 | 3450 | | | *4560 | 3310 | 6.19 |
| -9.8 ft | lb | *19070 | *19070 | *22400 | *22400 | *15170 | 11680 | *10580 | 7610 | | | *10050 | 7300 | (20.3) |
| -4.5 m | kg | | | *7340 | *7340 | *4850 | *4850 | | | | | *4640 | *4640 | 4.63 |
| -14.8 ft | lb | | | *16180 | *16180 | *10690 | *10690 | | | | | *10230 | *10230 | (15.2) |

NOTES:

- Lifting capacities are based on ISO 10567.
- Lifting capacity of the HX Series does not exceed 75% of tipping load with the machine on firm, level ground or 87% of full hydraulic capacity.
- The Lift-point is the bucket pivot mounting pin on the arm (without bucket mass).
- (*) indicates load limited by hydraulic capacity.

| ENGINE | STD | OPT |
|---|-----|-----|
| Cummins B4.5 | | |
| Engine Auto Idle | • | |
| Engine Auto Shutdown Control | • | |
| Emergency Engine Stop Switch | • | |
| HYDRAULIC SYSTEM | | |
| INTELLIGENT POWER CONTROL (IPC) UPGRADE | | |
| 3-Power Mode, 2-Work Mode, User Mode | • | |
| Variable Power Control | • | |
| Pump Flow Control | • | |
| Attachment Mode Flow Control | • | |
| Hyundai Bio Hydraulic oil (HBHO) | | • |
| CAB & INTERIOR STD OPT | | |
| ISO STANDARD CABIN | | |
| Rise-Up Type Windshield Wiper | • | |
| Radio / USB Player | • | |
| Handsfree Mobile Phone System with USB | • | |
| 12V Power Outlet (24V DC to 12V DC converter) | • | |
| Electric Horn | • | |
| All-Weather Steel Cab with 360° Visibility | • | |
| Safety glass - Tempered glass | • | |
| Safety glass - Tempered glass with front laminated glass | | • |
| Sliding Fold-In Front Window | • | |
| Sliding Side Window (LH) | • | |
| Lockable Door | • | |
| Hot & Cool Box | • | |
| Storage Compartment | • | |
| Transparent Cabin Roof-Cover | | • |
| Sun Visor | • | |
| Door And Cab Locks, One Key | • | |
| Pilot-Operated Slidable Joystick | • | |
| Adjustable L & R Consoles | • | |
| AUTOMATIC CLIMATE CONTROL | | |
| Air Conditioner & Heater | • | |
| Defroster | • | |
| Starting Aid (Air Grid Heater) for Cold Weather | • | |
| CENTRALIZED MONITORING | | |
| 8" LCD Display | • | |
| Engine Speed or Trip Meter / Accel. | • | |
| Engine Coolant Temperature Gauge | • | |
| Max Power | • | |
| Low Speed / High Speed | • | |
| Auto Idle | • | |
| Overload warning with alarm | • | |
| Check Engine | • | |
| Air Cleaner Clogging | • | |
| Indicators | • | |
| ECO Gauges | • | |
| Fuel Level Gauge | • | |
| Hyd. Oil Temperature Gauge | • | |
| Warnings | • | |
| Communication Error | • | |
| Low Battery | • | |
| Clock | • | |
| Cabin Lights | • | |
| Cabin Front Window Rain Guard | | • |
| Cabin Roof-Steel Cover | | • |
| SEAT | | |
| Adjustable Air Suspension Seat With Heater | • | |
| CABIN FOG (ISO 10262) LEVEL 2 | | |
| FOG (Falling Object Protective Structure)-ISO 10262 Level 2 | | • |
| CABIN ROPS | | |
| ROPS (Roll Over Protective Structures)-ISO 12117-2 | • | |

| SAFETY | STD | OPT |
|---|-----|-----|
| Lifting Mode | • | |
| Auto Safety Lock | • | |
| Seatbelt Warning Alarm | • | |
| Battery Master Switch | • | |
| Rear View Camera | • | |
| AAVM (Advanced Around View Monitoring) | | • |
| Four Front Working Lights (2 Boom Mounted, 2 Front Frame Mounted) | • | |
| Travel Alarm | • | |
| Rear Work Lamp | | • |
| Beacon Lamp | | • |
| Automatic Swing Brake | • | |
| Boom Holding System | • | |
| Arm Holding System | • | |
| Safety Lock Valve For Boom Cylinder With Overload Warning Device | | • |
| Safety Lock Valve For Arm Cylinder | | • |
| Swing Lock System | | • |
| Three Outside Rearview Mirror | • | |
| ATTACHMENT | | |
| Booms | | |
| 5.10 m, 16' 9" Mono | • | |
| 5.10 m, 16' 9" 2-Piece | | • |
| Arms | | |
| 2.2 m, 7' 3" | | • |
| 2.6 m, 8' 6" | • | |
| 3.1 m, 10' 2" | | • |
| OTHER | | |
| Fuel Pre-Filter | • | |
| Fuel Warmer | • | |
| Pre-Cleaner | • | |
| Self-Diagnostics System | • | |
| Hi MATE (Remote Management System) | | • |
| Batteries (2 x 12 V x 100 AH) | • | |
| Fuel Filler Pump (35 lpm) | | • |
| 2-Way auxiliary w Proportional control | • | |
| Rotating Piping Kit | | • |
| Air Compressor | | • |
| Quick Coupler Piping | • | |
| Quick Coupler | • | |
| One Pedal Straight Travel System | | • |
| Accumulator For Lowering Work Equipment | • | |
| Pattern Change Valve (2 Patterns) | • | |
| Fine (Cushion/Free) Swing Control | | • |
| Tool Kit | | • |
| UNDERCARRIAGE | | |
| Lower Frame Under Cover | • | |
| Track Shoes | | |
| Triple Grousers Shoes (500 mm, 20") | | • |
| Triple Grousers Shoes (600 mm, 24") | • | |
| Triple Grousers Shoe (700 mm, 28") | | • |
| Track Guard | • | |

* Standard and optional equipment may vary. Contact your Hyundai dealer for more information.
 The machine may vary according to international standards.
 * The photos may include attachments and optional equipment that are not available in your area.
 * Materials and specifications are subject to change without advance notice.
 * All imperial measurements rounded off to the nearest pound or inch.



6100 Atlantic Blvd., Norcross, GA 30071
 TEL (678) 823-7777 FAX (678) 823-7778



Printed in U.S.A.



HX160A L 8/2023 PS v1