

HD HYUNDAI
CONSTRUCTION EQUIPMENT

SPECIFICATIONS

HL980A

Powered By Cummins Performance Series Engine



*Photo may include optional equipment.

Net Power
351 HP (262kW) 2,000 rpm

Operating Weight
31,352 kg (69,120 lb) -
31,502 kg (69,450 lb)

Bucket Capacity
5.6 m³ (7.3 yd³)

building a
comfortable
tomorrow

SPECIFICATIONS | HL980A

ENGINE	
Maker / Model	CUMMINS / X12
Type	Tier 4F/ Stage V Emission Certified, 6 cylinder diesel engine with no manual regeneration.
Gross power (SAE J1995)	355 HP (265 kW) at 2,000 rpm
Net power (SAE J1349)	351 HP (262 kW) at 2,000 rpm
Max. Power	380 HP (283 kW) at 1,700 rpm
Peak gross Torque (SAE J1995)	1,370 lb.ft (1,857 N·m) at 1,400 rpm
Displacement	11.8 ℓ (720 in ³)

*Stage V & Tier 4 Final Certified

TRANSMISSION			
Torque Converter Type	3-elements, single-stage single-phase		
Travel Speed, km/h (mph)	4 Speed Transmission	5 Speed Transmission with lock up clutch	
Forward	1st	6.2 (3.9)	6.2 (3.9)
	2nd	11.6 (7.2)	11.9 (7.4)
	3rd	18.2 (11.3)	18.5 (11.5)
	4th	36.5 (22.7)	27.1 (16.8)
	5th	–	40.0 (24.9)
Reverse	1st	6.2 (3.9)	6.2 (3.9)
	2nd	11.6 (7.2)	11.9 (7.4)
	3rd	25.3 (15.7)	27.1 (16.8)

* This is the maximum travel speed of a standard machine with unfilled bucket.

AXLES	
Drive System	Four-wheel drive system
Mount	Fixed
Rear Axle Oscillation	Oscillating ± 11° degrees
Hub Reduction	Planetary reduction at wheel end
Differential	Conventional
Reduction Ratio	27.0

HYDRAULIC SYSTEM		
Type	Load sensing hydraulic system	
Pump	Variable displacement piston pump 462 lpm	
Control Valve	2 Spool (Bucket, Boom) 3 Spool (Bucket, Boom, Aux)	
System Pressure	280 bar (4,061 psi)	
Lift Circuit	The valve has four functions; Raise / Hold / Lower / Float Can adjust automatic kickout from horizontal to full lift.	
Tilt Circuit	The valve has three functions; Tilt back / Hold / Dump Can adjust automatic bucket positioner to desired load angle.	
Cylinder	Type: double acting No. of cylinders-bore × stroke	
	Lift	2–180 × 885 mm (2–7.1" × 2' 10.8")
	HL980A Tilt	1–200 × 550 mm (1–7.9" × 1' 9.7")
	HL980A XT Tilt	1–200 × 545 mm (1–7.9" × 1' 9.5")
Cycle Time	Raise from carry position : 6.6 Sec.	
	Dump, at maximum raise : 1.5 Sec.	
	Lower, empty, float down : 4.8 Sec.	
	Total : 12.9 Sec.	

* Hyundai Bio Hydraulic Oil (HBHO) available

OVERVIEW			
Description		HL980A	HL980A XT
Operating Weight		31,352 kg (69,120 lb)	31,500 kg (69,450 lb)
Bucket Capacity	Heaped	5.6 m ³ (7.3 yd ³)	5.6 m ³ (7.3 yd ³)
	Struck	4.8 m ³ (6.3 yd ³)	4.8 m ³ (6.3 yd ³)
Breakout Force-Bucket		24,670 kg (54,390 lb)	24,400 kg (53,795 lb)
Tipping Load	Straight	24,446 kg (53,895 lb)	21,650 kg (47,735 lb)
	Full Turn	21,271 kg (46,895 lb)	18,700 kg (41,230 lb)

TIRES	
Type	Tubeless, loader design tires
Standard	29.5 R25 L3 ★★
	29.5-25 28PR L5
Option	29.5 R25 XHA ★
	29.5 R25 L4 ★

BRAKES	
Service Brakes	Hydraulically actuated, wet disc brakes actuate all 4 wheels with independent axle-by-axle system. Self adjusting & wheel speed brake.
Parking Brake	Spring-applied, hydraulically released brake
Emergency Brake	When brake oil pressure drops, indicator light alerts operator and parking brake automatically applies.

STEERING SYSTEM	
Type	Load sensing hydrostatic articulated steering
Pump	Variable displacement piston pump, 242 lpm
System Pressure	210 bar (3,046 psi)
Cylinder	Double acting 2–95×468 mm (2–3.7"×1' 6.4")
Steering Angle	40° to both right and left angle, respectively
Features	Center-point frame articulation. Tilt and telescopic steering column.

SERVICE REFILL CAPACITIES	
Fuel Tank	430.0 liters (113.6 US gal)
Def Tank	44.5 liters (11.8 US gal)
Cooling System	45.5 liters (12.0 US gal)
Crankcase	34.0 liters (9.0 US gal)
Transmission	55.5 liters (14.7 US gal)
Front Axle	64.0 liters (16.9 US gal)
Rear Axle	64.0 liters (16.9 US gal)
Hydraulic Tank	184.0 liters (40.5 US gal)
Hydraulic System (Including Tank)	340.0 liters (74.8 US gal)

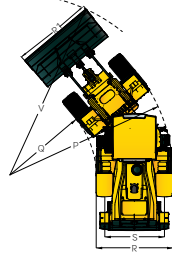
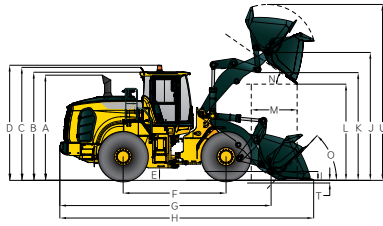
CAB NOISE LEVEL	
Guaranteed noise level presented below can be differed depending on a range of factors such as operating condition, speed of a cooling fan, types of engine and so forth. Hearing protection may be necessary if an operator is working in an improperly maintained cabin or exposed to a noisy environment by leaving doors and/or windows open.	
With cooling fan speed at maximum value:	
Operator sound pressure level (ISO 6396:2008)	70 dB(A)
Exterior sound power level (ISO 6395:2008)	108 dB(A)

* Distance of 15 m (49.2 ft), moving forward in second gear ratio.

CABIN	
ROPS / FOPS Cabin Meet ISO 3471 and ISO 3449	

DIMENSIONS | HL980A

All dimensions are approximate.



Unit: mm (ft-in)

DESCRIPTION	HL980A	HL980AXT
A Height to Top of Exhaust Pipe	3,715 (12' 2")	3,715 (12' 2")
B Height to top of cabin	3,865 (12' 8")	3,865 (12' 8")
C Height to top of product link antenna	3,905 (12' 10")	3,905 (12' 10")
D Height to top of warning beacon	3,995 (13' 1")	3,995 (13' 1")
E Ground clearance	495 (1' 7")	495 (1' 7")
F Wheelbase	3,700 (12' 2")	3,700 (12' 2")
G Overall length (without bucket)	8,175 (26' 10")	8,495 (27' 10")
H Shipping length (with bucket level on ground)	9,610 (31' 6")	9,930 (32' 7")

DESCRIPTION	HL980A	HL980AXT
I Hinge pin height at carry position	535 (1' 9")	630 (2' 1")
J Hinge pin height at maximum lift	4,615 (15' 2")	4,935 (16' 2")
K Lift Arm Clearance at Maximum Lift	3,870 (12' 8")	4,190 (13' 9")
L Dump Clearance at Maximum Lift and 45° Discharge	3,300 (10' 10")	3,620 (11' 11")
M Reach at Maximum Lift and 45° Discharge	1,490 (4' 11")	1,525 (5' 0")
N Dump Angle at Maximum Lift and Dump (on Stops)	50	50
O Roll Back Angle	42	42
	Ground	42
	Carry	49
P Clearance Circle (Diameter) to Outside of Tires	13,615 (44' 8")	13,615 (44' 8")
Q Clearance Circle (Diameter) to Inside of Tires	7,110 (23' 4")	7,110 (23' 4")
R Width Over Tires (Unloaded)	3,190 (10' 6")	3,190 (10' 6")
R1 Overall Width (with bucket)	2,740 (9')	2,740 (9')
S Tread Width	2,440 (8' 0")	2,440 (8' 0")

HL980A OPERATING SPECIFICATIONS WITH BUCKETS

Bucket Type	Linkage	Standard Linkage General Purpose—Pin On						High Lift Linkage Change
		Units	Bolt-On Cutting Edges	2 Piece Tooth	2 Piece Tooth & Seg	Bolt-On Cutting Edges	2 Piece Tooth	
Capacity—Rated	m ³	5.60	5.40	5.60	6.30	6.10	5.00	
	yd ³	7.30	7.10	7.30	8.20	8.00	6.50	
Capacity—Rated at 110% Fill Factor	m ³	6.16	5.94	6.16	6.93	6.71	5.50	
	yd ³	8.10	7.80	8.10	9.10	8.80	7.20	
Width	mm	3,450	3,500	3,500	3,450	3,500	3,490	
	ft/in	11'4"	11'6"	11'6"	11'4"	11'6"	11'5"	
Dump Clearance at Maximum Lift and 45° Discharge	mm	3,300	3,150	3,150	3,215	3,065	3,035	
	ft/in	10'10"	10'4"	10'4"	10'7"	10'1"	9'11"	
Reach at Maximum Lift and 45° Discharge	mm	1,490	1,610	1,610	1,575	1,695	1,685	
	ft/in	4'11"	5'3"	5'3"	5'2"	5'7"	5'6"	
Digging Depth	mm	105	125	125	105	125	155	
	ft/in	0'4"	0'5"	0'5"	0'4"	0'5"	0'6"	
T Shipping Length (with Bucket)	mm	9,610	9,800	9,800	9,730	9,920	9,935	
	ft/in	31'6"	32'2"	32'2"	31'11"	32'7"	32'7"	
U Overall Height with Bucket at Maximum Lift	mm	6,430	6,430	6,430	6,580	6,580	6,340	
	ft/in	21'1"	21'1"	21'1"	21'7"	21'7"	20'10"	
V Loader Clearance Circle with Bucket at Carry Position	mm	15,270	15,450	15,450	15,340	15,520	15,320	
	ft/in	50' 1"	50' 8"	50' 8"	50' 4"	50' 11"	50' 3"	
Static Tipping Load, Straight (No Tire Deflection)	kg	23,100	23,500	22,900	22,800	23,200	22,350	
	lb	50,930	51,810	50,490	50,270	51,150	49,275	
Static Tipping Load, Articulated (No Tire Deflection)	kg	20,100	20,450	19,900	19,850	20,200	19,500	
	lb	44,315	45,085	43,875	43,765	44,535	42,995	
Breakout Force	kg	24,670	26,200	24,670	22,800	24,090	22,620	
	lb	54,390	57,765	54,390	50,270	53,110	49,870	
Operating Weight*	kg	30,800	30,635	30,980	30,975	30,810	31,415	
	lb	67,905	67,540	68,300	68,290	67,925	69,260	

* All height and tire related dimensions are with standard 29.5 R25, ★★, L3 tires.

HL980A / HL980A XT BUCKET SELECTION CHART

Standard Lift Arm—General Purpose

Type	m ³	Material Density [ton / m ³]													
		1.1	1.2	1.3	1.4	1.5	1.6	1.7	1.8	1.9	2.0	2.1	2.2	2.3	2.4
Cutting Edge	5.6	6.4 m ³										5.3 m ³			
2-Bolt on Tooth	5.4	6.2 m ³										5.1 m ³			
2-Bolt on Tooth & Segment	5.6	6.4 m ³										5.3 m ³			
Cutting Edge	6.3	7.2 m ³				6.0 m ³									
2-Bolt on Tooth	6.1	7.0 m ³				5.8 m ³									
Spade Nose Rock	5.0	5.8 m ³										4.8 m ³			
High Lift Arm—General Purpose															
Cutting Edge	5.6	6.4 m ³										5.3 m ³			
2-Bolt on Tooth	5.4	6.2 m ³										5.1 m ³			
2-Bolt on Tooth & Segment	5.6	6.4 m ³										5.3 m ³			
Cutting Edge	6.3	7.2 m ³				6.0 m ³									
2-Bolt on Tooth	6.1	7.0 m ³				5.8 m ³									
Spade Nose Rock	5.0	5.8 m ³										4.8 m ³			

115% 100% 95%

ENGINE	STD	OPT
ENGINE, CUMMINS, X12		
3 Stage air precleaner	●	
Alternator, 95A	●	
Fuel warmer	●	
Engine oil level dipstick gauge	●	
Fuel / water separator	●	
WGT (Waste Gate Turbo)	●	
CLEAN EMISSION MODULE		
DOC, DPF and SCR	●	
Active Emission Regeneration (No Manual Regeneration Required)	●	
Stage V Certified Emissions	●	
EGR Free	●	
Automatic Regeneration	●	
COOLING SYSTEM		
Antifreeze	●	
Auto Reversing Fan (adjustable Time/ Interval Frequencies) w/ Manual Override	●	
Coolant Level Sight Gauge	●	
Fan guard	●	
Wide Fin Radiator	●	
POWER TRAIN		
TRANSMISSION		
Transmission F4/R3, computer controlled, electronic soft shift, auto-shift and kick-down features included	●	
Transmission F5/R3 with lock up clutch		●
Transmission oil sight level	●	
Wide Fin Transmission Oil Cooler	●	
AXLE		
Hydraulic lock differential (Front)	●	
Conventional (Rear)	●	
Heavy duty hydraulic lock differential (Front)		●
Heavy duty conventional (Rear)	●	●
BRAKE		
Heavy duty conventional (Rear)	●	
Service brake (Enclosed wet-disc)	●	
TIRES		
29.5 R25 L3 HH ★★	●	
29.5-25 28PR L5		●
29.5 R25 XHA H ★		●
29.5 R25 L4 H ★		●
HYDRAULIC SYSTEM		
Diagnostic pressure taps	●	
Hyundai Bio Hydraulic Oil (VG46)		●
Hydraulic oil level sight gauge	●	
Hydraulic Oil VG32		●
Hydraulic Oil VG46	●	
Wide Fin Hydraulic Oil Cooler	●	
ELECTRO-HYDRAULIC CONTROL		
Boom kickout, automatic	●	
Bucket positioner, automatic	●	
Extra piping for auxiliary function		●
Fingertip		●
Joystick	●	
Quick coupler piping	●	
Ride control system	●	
CAB & INTERIOR		
ALARMS, AUDIBLE AND VISUAL		
Air filter clogging	●	
Battery voltage	●	
Brake oil pressure	●	
DEF low level	●	
Engine coolant level	●	
Engine coolant temperature	●	
Engine oil pressure	●	
Fuel level	●	
Hydraulic oil temperature	●	
Parking brake	●	
Service brake oil pressure	●	
Seat belt ON/OFF	●	
Transmission error	●	
Transmission oil temperature		●

CAB & INTERIOR	STD	OPT
GAUGES		
Diesel Exhaust Fluid (DEF) level	●	
Engine coolant temperature	●	
Fuel level	●	
Horn, electric	●	
Speedometer	●	
Transmission oil temperature	●	
INDICATOR LIGHTS		
Clutch Cut Off	●	
Differential Lock	●	
Engine auto stop	●	
FNR	●	
High beam	●	
Parking brake	●	
Pilot cut off	●	
Ride control	●	
Seat belt ON/OFF	●	
Turning light	●	
LCD DISPLAY		
Clock and fault code	●	
DEF level	●	
DEF low level	●	
Engine rpm	●	
Horn, electric	●	
Job time and distance	●	
Operating hour counter	●	
Transmission gear range	●	
BATTERIES		
850CCA, 12V, 2PCS	●	
LIGHTING SYSTEM		
Brake lights (Counterweight)	●	
LED dome light	●	
2 Head lights on front tower	●	
2 Head lights (LED) on front tower		●
2 Stop and tail lights	●	
4 Turn signals	●	
4 Working lights on front roof	●	
2 Working lights on rear roof		●
4 Working lights (LED) on front roof		●
2 Working lights (LED) on rear roof		●
2 Working lights on grill	●	
2 Working lights (LED) on grill		●
SWITCHES		
Battery master switch	●	
Differential Lock		●
Emergency steering	●	
FNR shifter	●	
Hazard	●	
Parking	●	
Pilot cut off	●	
SYSTEM MEMORY SETTINGS		
Autolube, integrated in secondary display		●
Auto position	●	
Beacon light		●
Fine modulation	●	
Main light	●	
Mirror heat	●	
Quick coupler	●	
Rear wiper	●	
Ride control	●	
Work light	●	
Work load	●	
IGNITION		
Key	●	
Push Start Button		●
CAB (SOUND SUPPRESSED)		
24V to 12V DC converter (20A)	●	
Coat hook	●	
Magazine pocket	●	
One door cab	●	
Radio / USB player	●	

CAB & INTERIOR	STD	OPT
CAB(SOUND SUPPRESSED)		
Roller type sunshade (Front window)	●	
ROPS / FOPS CAB.	●	
Rubber floor mat	●	
Steering column, tilt and telescopic	●	
Steering wheel with knob	●	
Tinted safety glass	●	
Wrist rest	●	
DOOR		
Door and cab locks, one key	●	
Doors, service access (Locking)	●	
Doors, service access (Remote) control		●
AUTOMATIC CLIMATE CONTROL		
Air conditioner & heater	●	
Defroster	●	
Intermittent wiper and washer, front and rear	●	
SEAT		
3" Retractable seat belt & adjustable air suspension (Heated)	●	
PERSONAL STORAGE SPACE		
Console box	●	
Holder, can and cup	●	
PEDALS		
One brake pedal	●	
Dual-brake pedal		●
Accel pedal without ECO switch	●	
One accelerator pedal	●	
SAFETY		
Alarm, back-up	●	
Boom safety lock bar		●
Emergency steering	●	
Emergency stop		●
OBJECT DETECTION		
AAVM - All Around View Monitoring		●
IMOD (Intelligent Moving Object Detection)		●
RADAR * Secondary Mornitor		●
OTHERS		
2nd Monitor		●
3 Spool MCV	●	
5 speed T/M with lockup clutch		●
Air Compressor		●
Auto Engine Shut Down	●	
Auto Grease System		●
Articulation Locking Bar	●	
Heavy Counterweight	●	
LED Beacon Lamp		●
License Plate & 10W LED Lamp		●
Lift and tie-down hooks	●	
Loader linkage, sealed	●	
Sun Shade on Rear Window of Cabin		●
Vandalism protection caplocks	●	
Wheel Chocks		●
SAFETY		
Handrails	●	
Ladders	●	
Platforms	●	
Steps	●	
TELEMATICS		
ECD (Engine Connected Diagnostics)	●	
Hi-Mate, Mobile	●	
Hi-Mate, Satellite		●
GUARDS		
Belly-Pan Guard		●
Crankcase	●	
Fenders (Front)	●	
Fenders (Rear)		●
Transmission	●	

* Standard and optional equipment may vary. Contact your Hyundai dealer for more information. The machine may vary according to international standards.
 * The photos may include attachments and optional equipment that are not available in your area.
 * Materials and specifications are subject to change without advance notice.
 * All imperial measurements rounded off to the nearest pound or inch.



6100 Atlantic Blvd., Norcross, GA 30071
 TEL (678) 823-7777 FAX (678) 823-7778



Printed in U.S.A.

building a comfortable tomorrow

HL980A 8/2023 PS v1